

Saxenda®

liraglutide injection 3mg

HIGHLIGHTS OF PRESCRIBING INFORMATION

These highlights do not include all the information needed to use SAXENDA® safely and effectively. See full prescribing information for SAXENDA®.

SAXENDA® (liraglutide) injection, for subcutaneous use
Initial U.S. Approval: 2010

WARNING: RISK OF THYROID C-CELL TUMORS

See full prescribing information for complete boxed warning.

- Liraglutide causes thyroid C-cell tumors at clinically relevant exposures in both genders of rats and mice. It is unknown whether SAXENDA® causes thyroid C-cell tumors, including medullary thyroid carcinoma (MTC), in humans, as the human relevance of liraglutide-induced rodent thyroid C-cell tumors has not been determined (5.1).
- SAXENDA® is contraindicated in patients with a personal or family history of MTC or in patients with Multiple Endocrine Neoplasia syndrome type 2 (MEN 2). Counsel patients regarding the potential risk of MTC and the symptoms of thyroid tumors (4, 5.1, 13.1).

RECENT MAJOR CHANGES

Dosage and Administration (2.2)06/2022
Contraindications (4).....06/2022

INDICATIONS AND USAGE

SAXENDA® is a glucagon like peptide 1 (GLP-1) receptor agonist indicated as an adjunct to a reduced-calorie diet and increased physical activity for chronic weight management in:

Adult patients with an initial body mass index (BMI) of

- 30 kg/m² or greater (obese), or
- 27 kg/m² or greater (overweight) in the presence of at least one weight-related comorbid condition (e.g. hypertension, type 2 diabetes mellitus, or dyslipidemia) (1).

Pediatric patients aged 12 years and older with:

- body weight above 60 kg and
- an initial BMI corresponding to 30 kg/m² for adults (obese) by international cut-offs (1).

Limitations of Use:

- SAXENDA® contains liraglutide and should not be coadministered with other liraglutide-containing products or with any other GLP-1 receptor agonist(1).
- The safety and effectiveness of SAXENDA® in pediatric patients with type 2 diabetes have not been established (1).
- The safety and efficacy of SAXENDA® in combination with other products intended for weight loss have not been established (1).

DOSAGE AND ADMINISTRATION

- Inject SAXENDA® subcutaneously in the abdomen, thigh, or upper arm once daily at any time of day, without regard to the timing of meals (2.2).
- The recommended dose of SAXENDA® is 3 mg daily (2.3).
- Initiate at 0.6 mg per day for one week. In weekly intervals, increase the dose until a dose of 3 mg is reached (2.3).
- If pediatric patients do not tolerate an increased dose during dose escalation, the dose may also be lowered to the previous level. Dose escalation for pediatric patients may take up to 8 weeks (2.3).
- Pediatric patients who do not tolerate 3 mg daily may have their dose reduced to 2.4 mg daily (2.3).
- Adult patients with type 2 diabetes should monitor blood glucose prior to starting SAXENDA® and during SAXENDA® treatment (2.3).

DOSAGE FORMS AND STRENGTHS

- Injection: 6 mg/mL solution in a 3 mL pre-filled, single-patient-use pen that delivers doses of 0.6 mg, 1.2 mg, 1.8 mg, 2.4 mg or 3 mg (3).

CONTRAINDICATIONS

- Personal or family history of medullary thyroid carcinoma or Multiple Endocrine Neoplasia syndrome type 2 (4, 5.1).
- Hypersensitivity to liraglutide or any excipients in SAXENDA® (4, 5.7).
- Pregnancy (4, 8.1).

WARNINGS AND PRECAUTIONS

- Thyroid C-cell Tumors: See Boxed Warning (5.1).
- Acute Pancreatitis: Discontinue promptly if pancreatitis is suspected. Do not restart if pancreatitis is confirmed (5.2).
- Acute Gallbladder Disease: If cholelithiasis or cholecystitis are suspected, gallbladder studies are indicated (5.3).
- Hypoglycemia: Can occur in adults when SAXENDA® is used with an insulin secretagogue (e.g. a sulfonylurea) or insulin. The risk may be lowered by a reduction in the dose of

concomitantly administered insulin secretagogues or insulin. In the pediatric clinical trial, patients did not have type 2 diabetes. Hypoglycemia occurred in SAXENDA®-treated pediatric patients. Inform all patients of the risk of hypoglycemia and educate them on the signs and symptoms of hypoglycemia (2, 5.4).

- Heart Rate Increase: Monitor heart rate at regular intervals (5.5).
- Renal Impairment: Has been reported postmarketing, usually in association with nausea, vomiting, diarrhea, or dehydration which may sometimes require hemodialysis. Use caution when initiating or escalating doses of SAXENDA® in patients with renal impairment (5.6).
- Hypersensitivity Reactions: Postmarketing reports of serious hypersensitivity reactions (e.g., anaphylactic reactions and angioedema). Discontinue SAXENDA® and other suspect medications and promptly seek medical advice (5.7).
- Suicidal Behavior and Ideation: Monitor for depression or suicidal thoughts. Discontinue SAXENDA® if symptoms develop (5.8).

ADVERSE REACTIONS

- Most common adverse reactions, reported in greater than or equal to 5% are: nausea, diarrhea, constipation, vomiting, injection site reactions, headache, hypoglycemia, dyspepsia, fatigue, dizziness, abdominal pain, increased lipase, upper abdominal pain, pyrexia, and gastroenteritis (6.1).

To report SUSPECTED ADVERSE REACTIONS, contact Novo Nordisk Inc. at 1-844-363-4448 or FDA at 1-800-FDA-1088 or www.fda.gov/medwatch.

DRUG INTERACTIONS

- SAXENDA® delays gastric emptying. May impact absorption of concomitantly administered oral medications. Use with caution (7).

See 17 for PATIENT COUNSELING INFORMATION and Medication Guide.

Revised: 04/2023

FULL PRESCRIBING INFORMATION: CONTENTS*

BOXED WARNING: RISK OF THYROID C-CELL TUMORS

1 INDICATIONS AND USAGE

2 DOSAGE AND ADMINISTRATION

- 2.1 Patient Selection
- 2.2 Important Administration Instructions
- 2.3 Dosage in Adults and Pediatric Patients Aged 12 Years and Older

3 DOSAGE FORMS AND STRENGTHS

4 CONTRAINDICATIONS

5 WARNINGS AND PRECAUTIONS

- 5.1 Risk of Thyroid C-cell Tumors
- 5.2 Acute Pancreatitis
- 5.3 Acute Gallbladder Disease
- 5.4 Hypoglycemia
- 5.5 Heart Rate Increase
- 5.6 Renal Impairment
- 5.7 Hypersensitivity Reactions
- 5.8 Suicidal Behavior and Ideation

6 ADVERSE REACTIONS

- 6.1 Clinical Trials Experience
- 6.2 Post-Marketing Experience

7 DRUG INTERACTIONS

- 7.1 Oral Medications

8 USE IN SPECIFIC POPULATIONS

- 8.1 Pregnancy
- 8.2 Lactation
- 8.4 Pediatric Use
- 8.5 Geriatric Use
- 8.6 Renal Impairment
- 8.7 Hepatic Impairment
- 8.8 Gastroparesis

10 OVERDOSAGE

11 DESCRIPTION

12 CLINICAL PHARMACOLOGY

- 12.1 Mechanism of Action
- 12.2 Pharmacodynamics
- 12.3 Pharmacokinetics

13 NONCLINICAL TOXICOLOGY

- 13.1 Carcinogenesis, Mutagenesis, Impairment of Fertility

14 CLINICAL STUDIES

- 14.1 Weight Management Trials in Adults with Overweight or Obesity

- 14.2 Weight Management Trial in Pediatric Patients Ages 12 and Older with Obesity

- 14.3 Cardiovascular Outcomes Trial of Liraglutide 1.8 mg in Adult Patients with Type 2 Diabetes and Cardiovascular Disease

16 HOW SUPPLIED/STORAGE AND HANDLING

- 16.1 How Supplied
- 16.2 Recommended Storage

17 PATIENT COUNSELING INFORMATION

*Sections or subsections omitted from the full prescribing information are not listed.

FULL PRESCRIBING INFORMATION

WARNING: RISK OF THYROID C-CELL TUMORS

- Liraglutide causes dose-dependent and treatment-duration-dependent thyroid C-cell tumors at clinically relevant exposures in both genders of rats and mice. It is unknown whether SAXENDA® causes thyroid C-cell tumors, including medullary thyroid carcinoma (MTC), in humans, as the human relevance of liraglutide-induced rodent thyroid C-cell tumors has not been determined [see Warnings and Precautions (5.1) and Nonclinical Toxicology (13.1)].
- SAXENDA® is contraindicated in patients with a personal or family history of MTC and in patients with Multiple Endocrine Neoplasia syndrome type 2 (MEN 2). Counsel patients regarding the potential risk of MTC with use of SAXENDA® and inform them of symptoms of thyroid tumors (e.g., a mass in the neck, dysphagia, dyspnea, persistent hoarseness). Routine monitoring of serum calcitonin or using thyroid ultrasound is of uncertain value for early detection of MTC in patients treated with SAXENDA® [see Contraindications (4), Warnings and Precautions (5.1)].

1 INDICATIONS AND USAGE

SAXENDA® is indicated as an adjunct to a reduced-calorie diet and increased physical activity for chronic weight management in:

- Adult patients with an initial body mass index (BMI) of [see Dosage and Administration (2.1)]:
 - 30 kg/m² or greater (obese), or
 - 27 kg/m² or greater (overweight) in the presence of at least one weight-related comorbid condition (e.g., hypertension, type 2 diabetes mellitus, or dyslipidemia)
- Pediatric patients aged 12 years and older with:
 - body weight above 60 kg and
 - an initial BMI corresponding to 30 kg/m² or greater for adults (obese) by international cut-offs (Cole Criteria, Table 2) [see Dosage and Administration (2.1)]

Limitations of Use

- SAXENDA® contains liraglutide and should not be coadministered with other liraglutide-containing products or with any other GLP-1 receptor agonist.
- The safety and effectiveness of SAXENDA® in pediatric patients with type 2 diabetes have not been established.
- The safety and effectiveness of SAXENDA® in combination with other products intended for weight loss, including prescription drugs, over-the-counter drugs, and herbal preparations, have not been established.

2 DOSAGE AND ADMINISTRATION

2.1 Patient Selection

Select patients for SAXENDA® treatment as an adjunct to a reduced-calorie diet and increased physical activity for chronic weight management based on the BMI values provided in Tables 1 and 2.

Adult and Pediatric Patients

BMI is calculated by dividing weight in (kilograms) by height (in meters) squared. A chart for determining BMI based on height and weight is provided in Table 1.

Table 1. BMI Conversion Chart

Weight	(lb)	125	130	135	140	145	150	155	160	165	170	175	180	185	190	195	200	205	210	215	220	225	
	(kg)	56.8	59.1	61.4	63.6	65.9	68.2	70.5	72.7	75.0	77.3	79.5	81.8	84.1	86.4	88.6	90.9	93.2	95.5	97.7	100.0	102.3	
Height	(in)																						
	(cm)																						
58	147.3	26	27	28	29	30	31	32	34	35	36	37	38	39	40	41	42	43	44	45	46	47	
59	149.9	25	26	27	28	29	30	31	32	33	34	35	36	37	38	39	40	41	43	44	45	46	
60	152.4	24	25	26	27	28	29	30	31	32	33	34	35	36	37	38	39	40	41	42	43	44	
61	154.9	24	25	26	27	27	28	29	30	31	32	33	34	35	36	37	38	39	40	41	42	43	
62	157.5	23	24	25	26	27	27	28	29	30	31	32	33	34	35	36	37	38	38	39	40	41	
63	160.0	22	23	24	25	26	27	28	28	29	30	31	32	33	34	35	36	36	37	38	39	40	
64	162.6	22	22	23	24	25	26	27	28	28	29	30	31	32	33	34	34	35	36	37	38	39	
65	165.1	21	22	23	23	24	25	26	27	28	28	29	30	31	32	33	33	34	35	36	37	38	
66	167.6	20	21	22	23	23	24	25	26	27	27	28	29	30	31	32	32	33	34	35	36	36	
67	170.2	20	20	21	22	23	24	24	25	26	27	27	28	29	30	31	31	32	33	34	35	35	
68	172.7	19	20	21	21	22	23	24	24	25	26	27	27	28	29	30	30	31	32	33	34	34	
69	175.3	18	19	20	21	21	22	23	24	24	25	26	27	27	28	29	30	30	31	32	33	33	
70	177.8	18	19	19	20	21	22	22	23	24	24	25	26	27	27	28	29	29	30	31	32	32	
71	180.3	17	18	19	20	20	21	22	22	23	24	24	25	26	27	27	28	29	29	30	31	31	
72	182.9	17	18	18	19	20	20	21	22	22	23	24	24	25	26	27	27	28	29	29	30	31	
73	185.4	17	17	18	19	19	20	20	21	22	22	23	24	24	25	26	26	27	28	28	29	30	
74	188.0	16	17	17	18	19	19	20	21	21	22	23	23	24	24	25	26	26	27	28	28	29	
75	190.5	16	16	17	18	18	19	19	20	21	21	22	23	23	24	24	25	26	26	27	28	28	
76	193.0	15	16	16	17	18	18	19	20	20	21	21	22	23	23	24	24	25	26	26	27	27	

Pediatric Patients Aged 12 Years and Older

BMI cut-offs for obesity in pediatric patients aged 12 years and older are presented in Table 2.

Table 2: International Obesity Task Force BMI Cut-offs for Obesity by Sex and Age for Pediatric Patients Aged 12 Years and Older (Cole Criteria)

Age (years)	Body mass index 30 kg/m ²	
	Males	Females
12	26.02	26.67
12.5	26.43	27.24
13	26.84	27.76
13.5	27.25	28.20
14	27.63	28.57
14.5	27.98	28.87
15	28.30	29.11
15.5	28.60	29.29
16	28.88	29.43
16.5	29.14	29.56
17	29.41	29.69
17.5	29.70	29.84

2.2 Important Administration Instructions

- Prior to initiation of SAXENDA®, train patients on proper injection technique. Refer to the accompanying Instructions for Use for complete administration instructions with illustrations.
- Inspect SAXENDA® visually prior to each injection. Only use if solution is clear, colorless, and contains no particles.

- Inject SAXENDA® subcutaneously once daily at any time of day, without regard to the timing of meals.
- Inject SAXENDA® subcutaneously in the abdomen, thigh, or upper arm. No dose adjustment is needed if changing the injection site and/or timing.
- Rotate injection sites within the same region in order to reduce the risk of cutaneous amyloidosis [see Adverse Reactions (6.2)].
- If a dose is missed, resume the once-daily regimen as prescribed with the next scheduled dose. Do not administer an extra dose or increase the dose to make up for the missed dose.
- If more than 3 days have elapsed since the last SAXENDA® dose, reinstitute SAXENDA® at 0.6 mg daily and follow the dose escalation schedule in Table 3, to reduce the occurrence of gastrointestinal adverse reactions associated with reinstitution of treatment.

2.3 Dosage in Adults and Pediatric Patients Aged 12 Years and Older

- Initiate SAXENDA® with a dose of 0.6 mg daily for one week. Then follow the dose escalation schedule in Table 3 to minimize gastrointestinal adverse reactions [see Adverse Reactions (6.1)].

Table 3. Dose Escalation Schedule

Week	Daily Dose
1	0.6 mg
2	1.2 mg
3	1.8 mg
4	2.4 mg
5 and onward	3 mg

Adult Patients

- For adults, the recommended dosage of SAXENDA® is 3 mg daily, lower doses are for titration only.
- Discontinue SAXENDA® if the patient cannot tolerate the 3 mg dose.
- If patients do not tolerate an increased dose during dose escalation, consider delaying dose escalation for approximately one additional week.
- Evaluate the change in body weight 16 weeks after initiating SAXENDA® and discontinue SAXENDA® if the patient has not lost at least 4% of baseline body weight, since it is unlikely that the patient will achieve and sustain clinically meaningful weight loss with continued treatment.
- In adult patients with type 2 diabetes, monitor blood glucose prior to starting SAXENDA® and during SAXENDA® treatment.

Pediatric Patients

- For pediatric patients, the recommended maintenance dosage of SAXENDA® is 3 mg daily. Pediatric patients who do not tolerate 3 mg daily may have their maintenance dose reduced to 2.4 mg daily. Discontinue SAXENDA® if the patient cannot tolerate the 2.4 mg dose.
- If pediatric patients do not tolerate an increased dose during dose escalation, the dose may also be lowered to the previous level. Dose escalation for pediatric patients may take up to 8 weeks.
- Evaluate the change in BMI after 12 weeks on the maintenance dose and discontinue SAXENDA® if the patient has not had a reduction in BMI of at least 1% from baseline, since it is unlikely that the patient will achieve and sustain clinically meaningful weight loss with continued treatment.

3 DOSAGE FORMS AND STRENGTHS

Injection: 6 mg/mL clear, colorless solution in a 3 mL pre-filled, single-patient-use pen that delivers doses of 0.6 mg, 1.2 mg, 1.8 mg, 2.4 mg, or 3 mg.

4 CONTRAINDICATIONS

SAXENDA® is contraindicated in:

- Patients with a personal or family history of medullary thyroid carcinoma (MTC) or patients with Multiple Endocrine Neoplasia syndrome type 2 (MEN 2) [see *Warnings and Precautions* (5.1)].
- Patients with a serious hypersensitivity reaction to liraglutide or to any of the excipients in SAXENDA®. Serious hypersensitivity reactions including anaphylactic reactions and angioedema have been reported with SAXENDA® [see *Warnings and Precautions* (5.7)].
- Pregnancy [see *Use in Specific Populations* (8.1)].

5 WARNINGS AND PRECAUTIONS

5.1 Risk of Thyroid C-cell Tumors

Liraglutide causes dose-dependent and treatment-duration-dependent thyroid C-cell tumors (adenomas and/or carcinomas) at clinically relevant exposures in both genders of rats and mice [see *Nonclinical Toxicology* (13.1)]. Malignant thyroid C-cell carcinomas were detected in rats and mice. It is unknown whether SAXENDA® will cause thyroid C-cell tumors, including medullary thyroid carcinoma (MTC), in humans, as the human relevance of liraglutide-induced rodent thyroid C-cell tumors has not been determined.

Cases of MTC in patients treated with liraglutide have been reported in the postmarketing period; the data in these reports are insufficient to establish or exclude a causal relationship between MTC and liraglutide use in humans.

SAXENDA® is contraindicated in patients with a personal or family history of MTC or in patients with MEN 2. Counsel patients regarding the potential risk for MTC with the use of SAXENDA® and inform them of symptoms of thyroid tumors (e.g., a mass in the neck, dysphagia, dyspnea, persistent hoarseness).

Routine monitoring of serum calcitonin or using thyroid ultrasound is of uncertain value for early detection of MTC in patients treated with SAXENDA®. Such monitoring may increase the risk of unnecessary procedures, due to low test specificity for serum calcitonin and a high background incidence of thyroid disease. Significantly elevated serum calcitonin may indicate MTC, and patients with MTC usually have calcitonin values greater than 50 ng/L. If serum calcitonin is measured and found to be elevated, the patient should be further evaluated. Patients with thyroid nodules noted on physical examination or neck imaging should also be further evaluated.

5.2 Acute Pancreatitis

Based on spontaneous postmarketing reports, acute pancreatitis, including fatal and non-fatal hemorrhagic or necrotizing pancreatitis, has been observed in patients treated with liraglutide. After initiation of SAXENDA®, observe patients carefully for signs and symptoms of pancreatitis (including persistent severe abdominal pain, sometimes radiating to the back and which may or may not be accompanied by vomiting). If pancreatitis is suspected, SAXENDA® should promptly be discontinued and appropriate management should be initiated. If pancreatitis is confirmed, SAXENDA® should not be restarted.

In SAXENDA® clinical trials in adults, acute pancreatitis was confirmed by adjudication in 9 (0.3%) of 3291 SAXENDA®-treated patients and 2 (0.1%) of 1843 placebo-treated patients. In addition, there were 2 cases of acute pancreatitis in SAXENDA®-treated patients who prematurely withdrew from these clinical trials, occurring 74 and 124 days after the last dose. There were 2 additional cases in SAXENDA®-treated patients, 1 during an off-treatment follow-up period within 2 weeks of discontinuing SAXENDA®, and 1 that occurred in a patient who completed treatment and was off-treatment for 106 days.

In a SAXENDA® pediatric clinical trial, pancreatitis was not independently adjudicated. Pancreatitis was reported in 1 (0.8%) SAXENDA®-treated patient and resulted in treatment discontinuation.

Liraglutide has been studied in a limited number of adult patients with a history of pancreatitis. It is unknown if patients with a history of pancreatitis are at higher risk for development of pancreatitis on SAXENDA®.

5.3 Acute Gallbladder Disease

In SAXENDA® clinical trials in adults, 2.2% of SAXENDA®-treated patients reported adverse events of cholelithiasis versus 0.8% of placebo-treated patients. The incidence of cholecystitis was 0.8% in SAXENDA®-treated patients versus 0.4% in placebo-treated patients. The majority of SAXENDA®-treated patients with adverse events of cholelithiasis and cholecystitis required cholecystectomy. Substantial or rapid weight loss can increase the risk of cholelithiasis; however, the incidence of acute gallbladder disease was greater in SAXENDA®-treated patients than in placebo-treated patients even after accounting for the degree of weight loss. If cholelithiasis is suspected, gallbladder studies and appropriate clinical follow-up are indicated.

5.4 Hypoglycemia

Adult patients with type 2 diabetes mellitus on an insulin secretagogue (e.g., sulfonylurea) or insulin may have an increased risk of hypoglycemia with use of SAXENDA®, including severe hypoglycemia. In patients with type 2 diabetes, monitor blood glucose prior to starting SAXENDA® and during SAXENDA® treatment [see *Dosage and Administration* (2) and *Adverse Reactions* (6.1)].

The risk of hypoglycemia may be lowered by a reduction in the dose of sulfonylurea (or other concomitantly administered insulin secretagogues) or insulin. Inform patients using these concomitant medications of the risk of hypoglycemia and educate them on the signs and symptoms of hypoglycemia.

In the pediatric clinical trial, patients did not have type 2 diabetes but were provided with blood glucose meters. Clinically significant hypoglycemia, defined as blood glucose <54 mg/dL, occurred in 1.6% of the SAXENDA®-treated patients compared to 0.8% of placebo-treated patients [see *Adverse Reactions* (6.1)]. Inform all pediatric patients of the risk of hypoglycemia and educate them on the signs and symptoms of hypoglycemia.

5.5 Heart Rate Increase

Mean increases in resting heart rate of 2 to 3 beats per minute (bpm) were observed with routine clinical monitoring in SAXENDA®-treated adult patients compared to placebo in clinical trials. More patients treated with SAXENDA®, compared with placebo, had changes from baseline at two consecutive visits of more than 10 bpm (34% versus 19%, respectively) and 20 bpm (5% versus 2%, respectively). At least one resting heart rate exceeding 100 bpm was recorded for 6% of SAXENDA®-treated patients compared with 4% of placebo-treated patients, with this occurring at two consecutive study visits for 0.9% and 0.3%, respectively. Tachycardia was reported as an adverse reaction in 0.6% of SAXENDA®-treated patients and in 0.1% of placebo-treated patients.

In a clinical pharmacology trial that monitored heart rate continuously for 24 hours, SAXENDA® treatment was associated with a heart rate that was 4 to 9 bpm higher than that observed with placebo.

In a pediatric clinical trial, mean increases from baseline in resting heart rate of 3 to 7 bpm were observed with SAXENDA® treatment.

Heart rate should be monitored at regular intervals consistent with usual clinical practice. Patients should inform health care providers of palpitations or feelings of a racing heartbeat while at rest during SAXENDA® treatment. For patients who experience a sustained increase in resting heart rate while taking SAXENDA®, SAXENDA® should be discontinued.

5.6 Renal Impairment

In patients treated with GLP-1 receptor agonists, including SAXENDA®, there have been reports of acute renal failure and worsening of chronic renal failure, sometimes requiring hemodialysis [see *Adverse Reactions* (6.2)]. Some of these events were reported in patients without known underlying renal disease. A majority of the reported events occurred in patients who had experienced nausea, vomiting, or diarrhea leading to volume depletion. Some of the reported events occurred in patients receiving one or more medications known to affect renal function or volume status. Altered renal function has been reversed in many of the reported cases with supportive treatment and discontinuation of potentially causative agents, including liraglutide. Use caution when initiating or escalating doses of SAXENDA® in patients with renal impairment [see *Use in Specific Populations* (8.6)].

5.7 Hypersensitivity Reactions

There have been reports of serious hypersensitivity reactions (e.g., anaphylactic reactions and angioedema) in patients treated with SAXENDA® [see *Contraindications* (4) and *Adverse Reactions* (6.1, 6.2)]. If a hypersensitivity reaction occurs, the patient should discontinue SAXENDA® and other suspect medications and promptly seek medical advice.

Anaphylaxis and angioedema have been reported with other GLP-1 receptor agonists. Use caution in a patient with a history of anaphylaxis or angioedema with another GLP-1 receptor agonist because it is unknown whether such patients will be predisposed to these reactions with SAXENDA®.

5.8 Suicidal Behavior and Ideation

In SAXENDA® adult clinical trials, 9 (0.3%) of 3384 SAXENDA®-treated patients and 2 (0.1%) of the 1941 placebo-treated patients reported suicidal ideation; one of these SAXENDA®-treated patients attempted suicide.

In a SAXENDA® pediatric clinical trial, 1 (0.8%) of the 125 SAXENDA®-treated patients died by suicide. There was insufficient information to establish a causal relationship to SAXENDA®.

Patients treated with SAXENDA® should be monitored for the emergence or worsening of depression, suicidal thoughts or behavior, and/or any unusual changes in mood or behavior. Discontinue SAXENDA® in patients who experience suicidal thoughts or behaviors. Avoid SAXENDA® in patients with a history of suicidal attempts or active suicidal ideation.

6 ADVERSE REACTIONS

The following serious adverse reactions are described below or elsewhere in the prescribing information:

- Risk of Thyroid C-Cell Tumors [see *Warnings and Precautions* (5.1)]
- Acute Pancreatitis [see *Warnings and Precautions* (5.2)]
- Acute Gallbladder Disease [see *Warnings and Precautions* (5.3)]
- Risk for Hypoglycemia with Concomitant Use of Anti-Diabetic Therapy [see *Warnings and Precautions* (5.4)]
- Heart Rate Increase [see *Warnings and Precautions* (5.5)]
- Renal Impairment [see *Warnings and Precautions* (5.6)]
- Hypersensitivity Reactions [see *Warnings and Precautions* (5.7)]
- Suicidal Behavior and Ideation [see *Warnings and Precautions* (5.8)]

6.1 Clinical Trials Experience

Because clinical trials are conducted under widely varying conditions, adverse reaction rates observed in the clinical trials of a drug cannot be directly compared to rates in the clinical studies of another drug and may not reflect the rates observed in practice.

SAXENDA® was evaluated for safety in 5 double-blind, placebo controlled trials that included 3384 overweight or obese adult patients treated with SAXENDA® for a treatment period up to 56 weeks (3 trials), 52 weeks (1 trial), and 32 weeks (1 trial) and one trial of 56 weeks in 125 pediatric patients with obesity aged 12 years and older [see *Clinical Studies* (14.1, 14.2)]. All patients received study drug in addition to a reduced-calorie diet and increased physical activity counseling. In the adult trials, patients received SAXENDA® for a mean treatment duration of 46 weeks (median, 56 weeks). Baseline characteristics included a mean age of 47 years, 71% women, 85% white, 39% with hypertension, 15% with type 2 diabetes, 34% with dyslipidemia, 29% with a BMI greater than 40 kg/m², and 9% with cardiovascular disease. In one of the 56-week trials, a subset of patients (with abnormal glucose measurements at randomization) [see *Clinical Studies* (14.1)] were enrolled for a placebo-controlled 160-week period instead, followed by a 12-week off-treatment follow-up. For those participating in this 160-week period, patients received SAXENDA® for a mean treatment duration of 110 weeks (median, 159 weeks). For all trials, dosing was initiated and increased weekly to reach the 3 mg dose.

In adult clinical trials, 9.8% of patients treated with SAXENDA® and 4.3% of patients treated with placebo prematurely discontinued treatment as a result of adverse reactions. The most common adverse reactions leading to discontinuation were nausea (2.9% versus 0.2% for SAXENDA® and placebo, respectively), vomiting (1.7% versus less than 0.1%), and diarrhea (1.4% versus 0%).

Adverse reactions reported in greater than or equal to 2% of SAXENDA®-treated adult patients and more frequently than in placebo-treated patients are shown in Table 4. Adverse reactions reported in greater than or equal to 3% of SAXENDA®-treated pediatric patients and more frequently than in placebo-treated patients are shown in Table 5.

Table 4. Adverse Reactions Occurring in ≥2% of SAXENDA®-treated Adult Patients and More Frequently than Placebo

	Placebo N = 1941 %	SAXENDA® N = 3384 %
Nausea	13.8	39.3
Diarrhea	9.9	20.9
Constipation	8.5	19.4
Vomiting	3.9	15.7
Injection Site Reaction ¹	10.5	13.9
Headache	12.6	13.6
Hypoglycemia in T2DM ²	6.6	12.6
Dyspepsia	2.7	9.6
Fatigue	4.6	7.5
Dizziness	5.0	6.9
Abdominal Pain	3.1	5.4
Increased Lipase	2.2	5.3
Upper Abdominal Pain	2.7	5.1
Gastroenteritis	3.2	4.7
Gastroesophageal Reflux Disease	1.7	4.7
Abdominal Distension	3.0	4.5
Eructation	0.2	4.5
Urinary Tract Infection	3.1	4.3
Flatulence	2.5	4.0
Viral Gastroenteritis	1.6	2.8
Insomnia	1.7	2.4
Dry Mouth	1.0	2.3
Asthenia	0.8	2.1
Anxiety	1.6	2.0

¹ The most common reactions, each reported by 1% to 2.5% of SAXENDA®-treated patients and more commonly than by placebo-treated patients, included erythema, pruritus, and rash at the injection site.

² Defined as blood glucose <54 mg/dL with or without symptoms of hypoglycemia in patients with type 2 diabetes not on concomitant insulin (Study 2, SAXENDA® N=423, Placebo N=212). See text below for further information regarding hypoglycemia in patients with and without type 2 diabetes. T2DM = type 2 diabetes mellitus

Table 5. Adverse Reactions Occurring in ≥3% of SAXENDA®-treated Pediatric Patients and More Frequently than Placebo in a 56 Week Clinical Trial

	Placebo N = 126 %	SAXENDA® N = 125 %
Nausea	14.3	42.4
Vomiting	4.0	34.4
Diarrhea	14.3	22.4
Hypoglycemia ¹	4.0	15.2
Gastroenteritis	4.8	12.8
Dizziness	3.2	10.4
Pyrexia	7.1	8.0
Abdominal discomfort	0.8	4.8
Constipation	2.4	4.8
Dyslipidemia	3.2	4.8
Fatigue	3.2	4.8
Cough	3.2	4.0
Depression	2.4	4.0
Dyspepsia	2.4	4.0
Pain in extremity	2.4	4.0
Injection site pain	3.2	3.2
Flatulence	0	3.2
Increased Blood Creatine Kinase	2.4	3.2
Increased Lipase	0.8	3.2
Rash	0	3.2

¹ Defined as blood glucose <70 mg/dL with symptoms of hypoglycemia. Pediatric patients did not have type 2 diabetes mellitus. See text below for more detailed hypoglycemia information.

Hypoglycemia

Adult Patients with Type 2 Diabetes

In a clinical trial in adult patients with type 2 diabetes mellitus and overweight (excess weight) or obesity, severe hypoglycemia (defined as requiring the assistance of another person) occurred in 3 (0.7%) of 422 SAXENDA®-treated patients (all taking a sulfonylurea) and in none of the 212 placebo-treated patients. In this trial, among patients taking a sulfonylurea, hypoglycemia defined as a plasma glucose less than 54 mg/dL with or without symptoms occurred in 31 (28.2%) of 110 SAXENDA®-treated patients and 7 (12.7%) of 55 placebo-treated patients. The doses of sulfonylureas were reduced by 50% at the beginning of the trial per protocol. Among patients not taking a sulfonylurea, blood glucose less than 54 mg/dL with or without symptoms occurred in 22 (7.1%) of 312 SAXENDA®-treated patients and 7 (4.5%) of 157 placebo-treated patients.

In a SAXENDA® clinical trial in adult patients with overweight (excess weight) or obesity with type 2 diabetes mellitus treated with basal insulin and SAXENDA® in combination with a reduced-calorie diet and increased physical activity and up to 2 oral anti-diabetes medications, severe hypoglycemia was reported by 3 (1.5%) of 195 SAXENDA®-treated patients and 2 (1.0%) of 197 placebo-treated patients. No meaningful difference in hypoglycemia, defined as blood glucose less than 54 mg/dL with or without symptoms, was reported between groups.

Adult Patients without Type 2 Diabetes

In SAXENDA® clinical trials in adult patients without type 2 diabetes mellitus, there was no systematic capturing or reporting of hypoglycemia; patients were not provided with blood glucose meters or hypoglycemia diaries. Spontaneously reported symptomatic episodes of unconfirmed hypoglycemia were reported by 46 (1.6%) of 2962 SAXENDA®-treated patients and 19 (1.1%) of 1729 placebo-treated patients. Fasting plasma glucose values obtained at routine clinic visits less than 54 mg/dL, irrespective of hypoglycemic symptoms, occurred in 2 (0.1%) SAXENDA®-treated patients and 1 (0.1%) placebo-treated patients.

Pediatric Patients without Type 2 Diabetes

In a 56-week placebo-controlled clinical trial of pediatric patients without type 2 diabetes mellitus in which blood glucose meters were provided, 19 (15.2%) of SAXENDA®-treated patients had hypoglycemia with a blood glucose less than 70 mg/dL with

symptoms as compared to 5 (4.0%) of placebo-treated patients. Four (4) events of hypoglycemia defined as a plasma glucose less than 54 mg/dL occurred in 2 (1.6%) of 125 SAXENDA®-treated patients and 1 event occurred in 1 (0.8%) of 126 placebo-treated patients. No severe hypoglycemic episodes, defined as requiring assistance of another person to actively administer carbohydrate, glucagon, or other resuscitative actions, occurred in the SAXENDA® treatment group.

Gastrointestinal Adverse Reactions

In the adult clinical trials, approximately 68% of SAXENDA®-treated patients and 39% of placebo-treated patients reported gastrointestinal disorders; the most frequently reported was nausea (39% and 14% of patients treated with SAXENDA® and placebo, respectively). The percentage of patients reporting nausea declined as treatment continued. Other common adverse reactions that occurred at a higher incidence among SAXENDA®-treated patients included diarrhea, constipation, vomiting, dyspepsia, abdominal pain, dry mouth, gastritis, gastroesophageal reflux disease, flatulence, eructation and abdominal distension. Most episodes of gastrointestinal events were mild or moderate and did not lead to discontinuation of therapy (6.2% with SAXENDA® versus 0.8% with placebo discontinued treatment as a result of gastrointestinal adverse reactions). There have been reports of gastrointestinal adverse reactions, such as nausea, vomiting, and diarrhea, associated with volume depletion and renal impairment.

In a pediatric clinical trial, 8.0% of patients treated with SAXENDA® versus no patients who received placebo discontinued treatment as a result of gastrointestinal adverse reactions. Most adverse reactions leading to discontinuation were due to vomiting and nausea (4.8% and 3.2% of SAXENDA®-treated patients, respectively).

Asthenia, Fatigue, Malaise, Dysgeusia and Dizziness

Events of asthenia, fatigue, malaise, dysgeusia and dizziness were mainly reported within the first 12 weeks of treatment with SAXENDA® and were often co-reported with gastrointestinal events such as nausea, vomiting, and diarrhea.

Immunogenicity

The detection of antibody formation is highly dependent on the sensitivity and specificity of the assay. Additionally, the observed incidence of antibody (including neutralizing antibody) positivity in an assay may be influenced by several factors including assay methodology, sample handling, timing of sample collection, concomitant medications, and underlying disease. For these reasons, the incidence of antibodies to SAXENDA® cannot be directly compared with the incidence of antibodies of other products. Patients treated with SAXENDA® may develop anti-liraglutide antibodies. Anti-liraglutide antibodies were detected in 42 (2.8%) of 1505 SAXENDA®-treated adult patients with a post-baseline assessment. Antibodies that had a neutralizing effect on liraglutide in an *in vitro* assay occurred in 18 (1.2%) of 1505 SAXENDA®-treated patients. Presence of antibodies may be associated with a higher incidence of injection site reactions and reports of low blood glucose. In clinical trials, these events were usually classified as mild and resolved while patients continued on treatment.

In a pediatric clinical trial, anti-liraglutide antibodies were detected in 14 (12%) of 117 SAXENDA®-treated patients with a post-baseline assessment; 5 (4.3%) had persistent antibodies as defined by more than 2 antibody visits at least 16 weeks apart. Two patients (1.7%) remained positive throughout the follow-up period; 1 (0.9%) had antibodies cross reactive to native GLP-1. No patients had neutralizing antibodies.

Allergic Reactions

Urticaria was reported in 0.7% of SAXENDA®-treated patients and 0.5% of placebo-treated patients. Anaphylactic reactions, asthma, bronchial hyperreactivity, bronchospasm, oropharyngeal swelling, facial swelling, angioedema, pharyngeal edema, type IV hypersensitivity reactions have been reported in patients treated with liraglutide in clinical trials. Cases of anaphylactic reactions with additional symptoms such as hypotension, palpitations, dyspnea, and edema have been reported with marketed use of liraglutide. Anaphylactic reactions may potentially be life-threatening.

Breast Cancer

In SAXENDA® clinical trials in adults, breast cancer confirmed by adjudication was reported in 17 (0.7%) of 2379 SAXENDA®-treated women compared with 3 (0.2%) of 1300 placebo-treated women, including invasive cancer (13 SAXENDA®- and 2 placebo-treated women) and ductal carcinoma *in situ* (4 SAXENDA®- and 1 placebo-treated woman). The majority of cancers were estrogen- and progesterone-receptor positive. There were too few cases to determine whether these cases were related to SAXENDA®. In addition, there are insufficient data to determine whether SAXENDA® has an effect on pre-existing breast neoplasia.

Papillary Thyroid Cancer

In SAXENDA® clinical trials in adults, papillary thyroid carcinoma confirmed by adjudication was reported in 8 (0.2%) of 3291 SAXENDA®-treated patients compared with no cases among 1843 placebo-treated patients. Four of these papillary thyroid carcinomas were less than 1 cm in greatest diameter and 4 were diagnosed in surgical pathology specimens after thyroidectomy prompted by findings identified prior to treatment.

Colorectal Neoplasms

In SAXENDA® clinical trials in adults, benign colorectal neoplasms (mostly colon adenomas) confirmed by adjudication were reported in 20 (0.6%) of 3291 SAXENDA®-treated patients compared with 7 (0.4%) of 1843 placebo-treated patients. Six positively adjudicated cases of malignant colorectal neoplasms were reported in 5 SAXENDA®-treated patients (0.2%, mostly adenocarcinomas) and 1 in a placebo-treated patient (0.1%, neuroendocrine tumor of the rectum).

Cardiac Conduction Disorders

In SAXENDA® clinical trials in adults, 11 (0.3%) of 3384 SAXENDA®-treated patients compared with none of the 1941 placebo-treated patients had a cardiac conduction disorder, reported as first degree atrioventricular block, right bundle branch block, or left bundle branch block.

Hypotension

Adverse reactions related to hypotension (hypotension, orthostatic hypotension, circulatory collapse, and decreased blood pressure) were reported more frequently with SAXENDA® (1.1%) compared with placebo (0.5%) in SAXENDA® clinical trials in adults. Systolic blood pressure decreases to less than 80 mmHg were observed in 4 (0.1%) SAXENDA®-treated patients compared with no placebo-treated patients. One of the SAXENDA®-treated patients had hypotension associated with gastrointestinal adverse reactions and renal failure [see *Warnings and Precautions* (5.6)].

Laboratory Abnormalities

Liver Enzymes

Increases in alanine aminotransferase (ALT) greater than or equal to 10 times the upper limit of normal were observed in 5 (0.15%) SAXENDA®-treated patients (two of whom had ALT greater than 20 and 40 times the upper limit of normal) compared with 1 (0.05%) placebo-treated patient during the SAXENDA® clinical trials. Because clinical evaluation to exclude alternative causes of ALT and aspartate aminotransferase (AST) increases was not done in most cases, the relationship to SAXENDA® is uncertain. Some increases in ALT and AST were associated with other confounding factors (such as gallstones).

Serum Calcitonin

Calcitonin, a biological marker of MTC, was measured throughout the clinical development program [see *Warnings and Precautions* (5.1)]. More patients treated with SAXENDA® in the clinical trials were observed to have high calcitonin values during treatment, compared with placebo. The proportion of patients with calcitonin greater than or equal to 2 times the upper limit of normal at the end of the trial was 1.2% in SAXENDA®-treated patients and 0.6% in placebo-treated patients. Calcitonin values greater than 20 ng/L at the end of the trial occurred in 0.5% of SAXENDA®-treated patients and 0.2% of placebo-treated patients; among patients with pretreatment serum calcitonin less than 20 ng/L, none had calcitonin elevations to greater than 50 ng/L at the end of the trial.

Serum Lipase and Amylase

Serum lipase and amylase were routinely measured in the SAXENDA® clinical trials. Among SAXENDA®-treated patients, 2.1% had a lipase value at anytime during treatment of greater than or equal to 3 times the upper limit of normal compared with 1.0% of placebo-treated patients. 0.1% of SAXENDA®-treated patients had an amylase value at anytime in the trial of greater than or equal to 3 times the upper limit of normal versus 0.1% of placebo-treated patients. The clinical significance of elevations in lipase or amylase with SAXENDA® is unknown in the absence of other signs and symptoms of pancreatitis [see *Warnings and Precautions* (5.2)].

6.2 Post-Marketing Experience

The following adverse reactions have been reported during post-approval use of liraglutide, the active ingredient of SAXENDA®. Because these reactions are reported voluntarily from a population of uncertain size, it is not always possible to reliably estimate their frequency or establish a causal relationship to drug exposure.

Neoplasms

Medullary thyroid carcinoma

Gastrointestinal Disorders

Acute pancreatitis, hemorrhagic and necrotizing pancreatitis, sometimes resulting in death, ileus

Metabolism and Nutrition Disorders

Dehydration resulting from nausea, vomiting and diarrhea

Renal and Urinary Disorders

Increased serum creatinine, acute renal failure or worsening of chronic renal failure, sometimes requiring hemodialysis

General Disorders and Administration Site Conditions

Allergic reactions: rash and pruritus

Immune System Disorders

Angioedema and anaphylactic reactions

Hepato-biliary Disorders

Hyperbilirubinemia, elevations of liver enzymes, cholestasis and hepatitis

Skin and Subcutaneous Tissue Disorders

Cutaneous amyloidosis

7 DRUG INTERACTIONS

7.1 Oral Medications

SAXENDA® causes a delay of gastric emptying, and thereby has the potential to impact the absorption of concomitantly administered oral medications. In clinical pharmacology trials, liraglutide did not affect the absorption of the tested orally administered medications to any clinically relevant degree. Nonetheless, monitor for potential consequences of delayed absorption of oral medications concomitantly administered with SAXENDA®.

8 USE IN SPECIFIC POPULATIONS

8.1 Pregnancy

Risk Summary

SAXENDA® is contraindicated during pregnancy because weight loss offers no potential benefit to a pregnant woman and may result in fetal harm [see *Clinical Considerations*]. There are no available data with liraglutide in pregnant women to inform a drug associated risk for major birth defects and miscarriage. SAXENDA® should not be used during pregnancy. If a patient wishes to become pregnant, or pregnancy occurs, treatment with SAXENDA® should be discontinued.

Animal reproduction studies identified increased adverse embryofetal developmental outcomes from exposure during pregnancy. Liraglutide exposure was associated with early embryonic deaths and an imbalance in some fetal abnormalities in pregnant rats administered liraglutide during organogenesis at doses that approximate clinical exposures at the maximum recommended human dose (MRHD) of 3 mg/day. In pregnant rabbits administered liraglutide during organogenesis, decreased fetal weight and an increased incidence of major fetal abnormalities were seen at exposures below the human exposures at the MRHD [see *Animal Data*].

The estimated background risk of major birth defects and miscarriage for the indicated populations is unknown. In the U.S. general population, the estimated background risk of major birth defects and miscarriage of clinically recognized pregnancies is 2-4% and 15-20%, respectively.

Clinical Considerations

Disease-associated maternal and/or embryofetal risk

A minimum weight gain, and no weight loss, is recommended for all pregnant women, including those who are already overweight or obese, due to the necessary weight gain that occurs in maternal tissues during pregnancy.

Animal Data

Liraglutide has been shown to be teratogenic in rats at or above 0.8-times systemic exposures in obese humans resulting from the maximum recommended human dose (MRHD) of 3 mg/day based on plasma area under the time-concentration curve (AUC) comparison. Liraglutide has been shown to cause reduced growth and increased total major abnormalities in rabbits at systemic exposures below exposure in obese humans at the MRHD based on plasma AUC comparison.

Female rats given subcutaneous doses of 0.1, 0.25 and 1 mg/kg/day liraglutide beginning 2 weeks before mating through gestation day 17 had estimated systemic exposures 0.8-, 3-, and 11-times the exposure in obese humans at the MRHD based on plasma AUC comparison. The number of early embryonic deaths in the 1 mg/kg/day group increased slightly. Fetal abnormalities and variations in kidneys and blood vessels, irregular ossification of the skull, and a more complete state of ossification occurred at all doses. Mottled liver and minimally kinked ribs occurred at the highest dose. The incidence of fetal malformations in liraglutide-treated groups exceeding concurrent and historical controls were misshapen oropharynx and/or narrowed opening into larynx at 0.1 mg/kg/day and umbilical hernia at 0.1 and 0.25 mg/kg/day.

Pregnant rabbits given subcutaneous doses of 0.01, 0.025 and 0.05 mg/kg/day liraglutide from gestation day 6 through day 18 inclusive, had estimated systemic exposures less than the exposure in obese humans at the MRHD of 3 mg/day at all doses, based on plasma AUC comparison. Liraglutide decreased fetal weight and dose-dependently increased the incidence of total major fetal abnormalities at all doses. The incidence of malformations exceeded concurrent and historical controls at 0.01 mg/kg/day (kidneys, scapula), greater than or equal to 0.01 mg/kg/day (eyes, forelimb), 0.025 mg/kg/day (brain, tail and sacral vertebrae, major blood vessels and heart, umbilicus), greater than or equal to 0.025 mg/kg/day (sternum) and at 0.05 mg/kg/day (parietal bones, major blood vessels). Irregular ossification and/or skeletal abnormalities occurred in the skull and jaw, vertebrae and ribs, sternum, pelvis, tail, and scapula; and dose-dependent minor skeletal variations were observed. Visceral abnormalities occurred in blood vessels, lung, liver, and esophagus. Bilobed or bifurcated gallbladder was seen in all treatment groups, but not in the control group.

In pregnant female rats given subcutaneous doses of 0.1, 0.25 and 1 mg/kg/day liraglutide from gestation day 6 through weaning or termination of nursing on lactation day 24, estimated systemic exposures were 0.8-, 3-, and 11-times exposure in obese humans at the MRHD of 3 mg/day, based on plasma AUC comparison. A slight delay in parturition was observed in the majority of treated rats. Group mean body weight of neonatal rats from liraglutide-treated

dams was lower than neonatal rats from control group dams. Bloody scabs and agitated behavior occurred in male rats descended from dams treated with 1 mg/kg/day liraglutide. Group mean body weight from birth to postpartum day 14 trended lower in F₂ generation rats descended from liraglutide-treated rats compared to F₂ generation rats descended from controls, but differences did not reach statistical significance for any group.

8.2 Lactation

Risk Summary

There are no data on the presence of liraglutide in human milk, the effects on the breastfed infant, or effects on milk production. Liraglutide was present in the milk of lactating rats (see *Data*).

The developmental and health benefits of breastfeeding should be considered along with the mother's clinical need for SAXENDA® and any potential adverse effects on the breastfed infant from SAXENDA® or from the underlying maternal condition.

Data

In lactating rats, liraglutide was present unchanged in milk at concentrations approximately 50% of maternal plasma concentrations.

8.4 Pediatric Use

The safety and effectiveness of SAXENDA® as an adjunct to a reduced-calorie diet and increased physical activity for chronic weight management have been established in pediatric patients aged 12 years and older with body weight above 60 kg and an initial BMI corresponding to 30 kg/m² or greater for adults (obese) by international cut-offs (see Table 2). Use of SAXENDA® for this indication is supported by a 56-week double-blind, placebo-controlled clinical trial in 251 pediatric patients aged 12 to 17 years, a pharmacokinetic study in pediatric patients, and studies in adults with obesity [see *Clinical Pharmacology (12.3)* and *Clinical Studies (14.1, 14.2)*].

In the pediatric clinical trial, there was one death due to suicide in a SAXENDA®-treated patient [see *Warnings and Precautions (5.8)*]; one SAXENDA®-treated patient had an event of pancreatitis [see *Warnings and Precautions (5.2)*]; more episodes of hypoglycemia confirmed by self blood glucose monitoring occurred in SAXENDA®-treated patients compared to placebo [see *Warnings and Precautions (5.4)* and *Adverse Reactions (6.1)*]; and mean increases in resting heart rate of 3 to 7 bpm from baseline were observed with SAXENDA®-treated patients [see *Warnings and Precautions (5.5)*].

The safety and effectiveness of SAXENDA® have not been established in patients less than 12 years of age.

8.5 Geriatric Use

In the SAXENDA® clinical trials, 232 (6.9%) of the SAXENDA®-treated patients were 65 years of age and over, and 17 (0.5%) of the SAXENDA®-treated patients were 75 years of age and over. No overall differences in safety or effectiveness were observed between these patients and younger patients, but greater sensitivity of some older individuals cannot be ruled out.

8.6 Renal Impairment

There is limited experience with SAXENDA® in patients with mild, moderate, and severe renal impairment, including end-stage renal disease. However, there have been postmarketing reports of acute renal failure and worsening of chronic renal failure with liraglutide, which may sometimes require hemodialysis [see *Warnings and Precautions (5.6)* and *Adverse Reactions (6.2)*]. SAXENDA® should be used with caution in this patient population [see *Clinical Pharmacology (12.3)*].

8.7 Hepatic Impairment

There is limited experience in patients with mild, moderate, or severe hepatic impairment. Therefore, SAXENDA® should be used with caution in this patient population [see *Clinical Pharmacology (12.3)*].

8.8 Gastroparesis

SAXENDA® slows gastric emptying. SAXENDA® has not been studied in patients with pre-existing gastroparesis.

10 OVERDOSAGE

Overdoses have been reported in clinical trials and post-marketing use of liraglutide. Effects have included severe nausea, severe vomiting and severe hypoglycemia. In the event of overdose, appropriate supportive treatment should be initiated according to the patient's clinical signs and symptoms.

11 DESCRIPTION

SAXENDA® contains liraglutide, an analog of human GLP-1 and acts as a GLP-1 receptor agonist. The peptide precursor of liraglutide, produced by a process that includes expression of recombinant DNA in *Saccharomyces cerevisiae*, has been engineered to be 97% homologous to native human GLP-1 by substituting arginine for lysine at position 34. Liraglutide is made by attaching a C-16 fatty acid (palmitic acid) with a glutamic acid spacer on the remaining lysine residue at position 26 of the peptide precursor. The molecular formula of liraglutide is C₁₇₂H₂₆₅N₄₃O₅₁ and the molecular weight is 3751.2 Daltons. The structural formula (Figure 1) is:

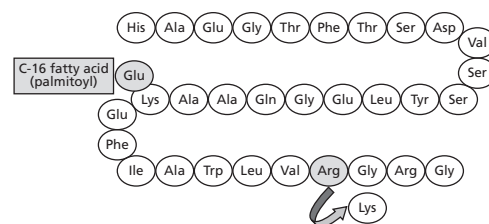


Figure 1. Structural Formula of liraglutide

SAXENDA® injection is a sterile, aqueous, clear, colorless or almost colorless solution for subcutaneous use. Each 1 mL of SAXENDA® solution contains 6 mg of liraglutide and the following inactive ingredients: disodium phosphate dihydrate, 1.42 mg; propylene glycol, 14 mg; phenol, 5.5 mg; and water for injection. SAXENDA® has a pH of approximately 8.15, hydrochloric acid or sodium hydroxide may be added to adjust pH. Each pre-filled pen contains a 3 mL solution of SAXENDA® equivalent to 18 mg liraglutide (free-base, anhydrous).

12 CLINICAL PHARMACOLOGY

12.1 Mechanism of Action

Liraglutide is an acylated human glucagon-like peptide-1 (GLP-1) receptor agonist with 97% amino acid sequence homology to endogenous human GLP-1(7-37). Like endogenous GLP-1, liraglutide binds to and activates the GLP-1 receptor, a cell-surface receptor coupled to adenylyl cyclase activation through the stimulatory G-protein, G_s. Endogenous GLP-1 has a half-life of 1.5-2 minutes due to degradation by the ubiquitous endogenous enzymes, dipeptidyl peptidase 4 (DPP-4) and neutral endopeptidases (NEP). Unlike native GLP-1, liraglutide is stable against metabolic degradation by both peptidases and has a plasma half-life of 13 hours after subcutaneous administration. The pharmacokinetic profile of liraglutide, which makes it suitable for once-daily administration, is a result of self-association that delays absorption, plasma protein binding, and stability against metabolic degradation by DPP-4 and NEP.

GLP-1 is a physiological regulator of appetite and calorie intake, and the GLP-1 receptor is present in several areas of the brain involved in appetite regulation. In animal studies, peripheral administration of liraglutide resulted in the presence of liraglutide in specific brain regions regulating appetite, including the hypothalamus. Although liraglutide activated neurons in brain regions known to regulate appetite, specific brain regions mediating the effects of liraglutide on appetite were not identified in rats.

12.2 Pharmacodynamics

Liraglutide lowers body weight through decreased calorie intake. Liraglutide does not increase 24-hour energy expenditure.

As with other GLP-1 receptor agonists, liraglutide stimulates insulin secretion and reduces glucagon secretion in a glucose-dependent manner. These effects can lead to a reduction of blood glucose.

Cardiac Electrophysiology (QTc) in healthy volunteers

The effect of liraglutide on cardiac repolarization was tested in a QTc study. Liraglutide at steady-state concentrations after daily doses up to 1.8 mg did not produce QTc prolongation. The maximum liraglutide plasma concentration (C_{max}) in overweight and obese subjects treated with liraglutide 3 mg is similar to the C_{max} observed in the liraglutide QTc study in healthy volunteers.

12.3 Pharmacokinetics

Absorption - Following subcutaneous administration, maximum concentrations of liraglutide are achieved at 11 hours post dosing. The average liraglutide steady state concentration (AUC_{τ/24}) reached approximately 116 ng/mL in obese (BMI 30-40 kg/m²) subjects following administration of SAXENDA®. Liraglutide exposure increased proportionally in the dose range of 0.6 mg to 3 mg. The intra-subject coefficient of variation for liraglutide AUC was 11% following single dose administration. Liraglutide exposures were considered similar among three subcutaneous injection sites (upper arm, abdomen, and thigh). Absolute bioavailability of liraglutide following subcutaneous administration is approximately 55%.

Distribution - The mean apparent volume of distribution after subcutaneous administration of liraglutide 3 mg is 20-25 L (for a person weighing approximately 100 kg). The mean volume of distribution after intravenous administration of liraglutide is 0.07 L/kg. Liraglutide is extensively bound to plasma protein (greater than 98%).

Metabolism - During the initial 24 hours following administration of a single [3H]-liraglutide dose to healthy subjects, the major component in plasma was intact liraglutide. Liraglutide is endogenously metabolized in a similar manner to large proteins without a specific organ as a major route of elimination.

Elimination - Following a [3H]-liraglutide dose, intact liraglutide was not detected in urine or feces. Only a minor part of the administered radioactivity was excreted as liraglutide-related metabolites in urine or feces (6% and 5%, respectively). The majority of urine and feces radioactivity was excreted during the first 6-8 days. The mean apparent clearance following subcutaneous administration

of a single dose of liraglutide is approximately 0.9-1.4 L/h with an elimination half-life of approximately 13 hours, making liraglutide suitable for once daily administration.

Specific Populations

Elderly - Age had no effect on the pharmacokinetics of liraglutide based on a pharmacokinetic study in healthy elderly subjects (65 to 83 years) and population pharmacokinetic analyses of data from overweight and obese patients 18 to 82 years of age [see Use in Specific Populations (8.5)].

Gender - Based on the results of population pharmacokinetic analyses, females have 24% lower weight adjusted clearance of SAXENDA® compared to males.

Race and Ethnicity - Race and ethnicity had no effect on the pharmacokinetics of liraglutide based on the results of population pharmacokinetic analyses that included overweight and obese patients of Caucasian, Black, Asian and Hispanic/Non-Hispanic groups.

Body Weight - Body weight significantly affects the pharmacokinetics of liraglutide based on results of population pharmacokinetic analyses conducted in patients with body weight range of 60-234 kg. The exposure of liraglutide decreases as baseline body weight increases.

Pediatric - A population pharmacokinetic analysis was conducted for SAXENDA® using data from 134 pediatric patients (12 to 17 years of age) with obesity. The liraglutide exposure in the pediatric patients was similar to that in adults with obesity [see Use in Specific Populations (8.4)].

Renal Impairment - The single-dose pharmacokinetics of liraglutide were evaluated in patients with varying degrees of renal impairment. Patients with mild (estimated creatinine clearance 50-80 mL/min) to severe (estimated creatinine clearance less than 30 mL/min) renal impairment and patients with end-stage renal disease requiring dialysis were included in the trial. Compared to healthy subjects, liraglutide AUC in mild, moderate, and severe renal impairment and in end-stage renal disease was on average 35%, 19%, 29% and 30% lower, respectively [see Use in Specific Populations (8.6)].

Hepatic Impairment - The single-dose pharmacokinetics of liraglutide were evaluated in patients with varying degrees of hepatic impairment. Patients with mild (Child Pugh score 5-6) to severe (Child Pugh score greater than 9) hepatic impairment were included in the trial. Compared to healthy subjects, liraglutide AUC in subjects with mild, moderate and severe hepatic impairment was on average 11%, 14% and 42% lower, respectively [see Use in Specific Populations (8.7)].

Drug Interactions

In vitro assessment of drug-drug interactions

Liraglutide has low potential for pharmacokinetic drug-drug interactions related to cytochrome P450 (CYP) and plasma protein binding.

In vivo assessment of drug-drug interactions

The drug-drug interaction studies were performed at steady state with liraglutide 1.8 mg/day. The effect on rate of gastric emptying was equivalent between liraglutide 1.8 mg and 3 mg (acetaminophen AUC_{0-300min}). Administration of the interacting drugs was timed so that C_{max} of liraglutide (8-12 h) would coincide with the absorption peak of the co-administered drugs.

Oral Contraceptives

A single dose of an oral contraceptive combination product containing 0.03 mg ethinylestradiol and 0.15 mg levonorgestrel was administered under fed conditions and 7 hours after the dose of liraglutide at steady state. Liraglutide lowered ethinylestradiol and levonorgestrel C_{max} by 12% and 13%, respectively. There was no effect of liraglutide on the overall exposure (AUC) of ethinylestradiol. Liraglutide increased the levonorgestrel AUC_{0-∞} by 18%. Liraglutide delayed T_{max} for both ethinylestradiol and levonorgestrel by 1.5 h.

Digoxin

A single dose of digoxin 1 mg was administered 7 hours after the dose of liraglutide at steady state. The concomitant administration with liraglutide resulted in a reduction of digoxin AUC by 16%; C_{max} decreased by 31%. Digoxin median time to maximal concentration (T_{max}) was delayed from 1 h to 1.5 h.

Lisinopril

A single dose of lisinopril 20 mg was administered 5 minutes after the dose of liraglutide at steady state. The co-administration with liraglutide resulted in a reduction of lisinopril AUC by 15%; C_{max} decreased by 27%. Lisinopril median T_{max} was delayed from 6 h to 8 h with liraglutide.

Atorvastatin

Liraglutide did not change the overall exposure (AUC) of atorvastatin following a single dose of atorvastatin 40 mg, administered 5 hours after the dose of liraglutide at steady state. Atorvastatin C_{max} was decreased by 38% and median T_{max} was delayed from 1 h to 3 h with liraglutide.

Acetaminophen

Liraglutide did not change the overall exposure (AUC) of acetaminophen following a single dose of acetaminophen 1000 mg, administered 8 hours after the dose of liraglutide at steady state.

Acetaminophen C_{max} was decreased by 31% and median T_{max} was delayed up to 15 minutes.

Griseofulvin

Liraglutide did not change the overall exposure (AUC) of griseofulvin following co-administration of a single dose of griseofulvin 500 mg with liraglutide at steady state. Griseofulvin C_{max} increased by 37% while median T_{max} did not change.

Insulin Detemir

No pharmacokinetic interaction was observed between liraglutide and insulin detemir when separate subcutaneous injections of insulin detemir 0.5 Unit/kg (single-dose) and liraglutide 1.8 mg (steady state) were administered to patients with type 2 diabetes mellitus.

13 NONCLINICAL TOXICOLOGY

13.1 Carcinogenesis, Mutagenesis, Impairment of Fertility

A 104-week carcinogenicity study was conducted in male and female CD-1 mice at doses of 0.03, 0.2, 1, and 3 mg/kg/day liraglutide administered by bolus subcutaneous injection yielding systemic exposures 0.2-, 2-, 10- and 43-times the exposure in obese humans, respectively, at the maximum recommended human dose (MRHD) of 3 mg/day based on plasma AUC comparison. A dose-related increase in benign thyroid C-cell adenomas was seen in the 1 and the 3 mg/kg/day groups with incidences of 13% and 19% in males and 6% and 20% in females, respectively. C-cell adenomas did not occur in control groups or 0.03 and 0.2 mg/kg/day groups. Treatment-related malignant C-cell carcinomas occurred in 3% of females in the 3 mg/kg/day group. Thyroid C-cell tumors are rare findings during carcinogenicity testing in mice. A treatment-related increase in fibrosarcomas was seen on the dorsal skin and subcutis, the body surface used for drug injection, in males in the 3 mg/kg/day group. These fibrosarcomas were attributed to the high local concentration of drug near the injection site. The liraglutide concentration in the clinical formulation (6 mg/mL) is 10-times higher than the concentration in the formulation used to administer 3 mg/kg/day liraglutide to mice in the carcinogenicity study (0.6 mg/mL).

A 104-week carcinogenicity study was conducted in male and female Sprague Dawley rats at doses of 0.075, 0.25 and 0.75 mg/kg/day liraglutide administered by bolus subcutaneous injection with exposures 0.5-, 2- and 7-times the exposure in obese humans, respectively, resulting from the MRHD based on plasma AUC comparison. A treatment-related increase in benign thyroid C-cell adenomas was seen in males in 0.25 and 0.75 mg/kg/day liraglutide groups with incidences of 12%, 16%, 42%, and 46% and in all female liraglutide-treated groups with incidences of 10%, 27%, 33%, and 56% in 0 (control), 0.075, 0.25, and 0.75 mg/kg/day groups, respectively. A treatment-related increase in malignant thyroid C-cell carcinomas was observed in all male liraglutide-treated groups with incidences of 2%, 8%, 6%, and 14% and in females at 0.25 and 0.75 mg/kg/day with incidences of 0%, 0%, 4%, and 6% in 0 (control), 0.075, 0.25, and 0.75 mg/kg/day groups, respectively. Thyroid C-cell carcinomas are rare findings during carcinogenicity testing in rats.

Studies in mice demonstrated that liraglutide-induced C-cell proliferation was dependent on the GLP-1 receptor and that liraglutide did not cause activation of the RERanged during Transfection (RET) proto-oncogene in thyroid C-cells.

Human relevance of thyroid C-cell tumors in mice and rats is unknown and has not been determined by clinical studies or nonclinical studies [see Boxed Warning and Warnings and Precautions (5.1)].

Liraglutide was negative with and without metabolic activation in the Ames test for mutagenicity and in a human peripheral blood lymphocyte chromosome aberration test for clastogenicity. Liraglutide was negative in repeat-dose *in vivo* micronucleus tests in rats.

In rat fertility studies using subcutaneous doses of 0.1, 0.25 and 1 mg/kg/day liraglutide, males were treated for 4 weeks prior to and throughout mating and females were treated 2 weeks prior to and throughout mating until gestation day 17. No direct adverse effects on male fertility was observed at doses up to 1 mg/kg/day, a high dose yielding an estimated systemic exposure 11-times the exposure in obese humans at the MRHD, based on plasma AUC comparison. In female rats, an increase in early embryonic deaths occurred at 1 mg/kg/day. Reduced body weight gain and food consumption were observed in females at the 1 mg/kg/day dose.

14 CLINICAL STUDIES

14.1 Weight Management Trials in Adults with Overweight or Obesity

The safety and efficacy of SAXENDA® for chronic weight management in conjunction with reduced caloric intake and increased physical activity were studied in three 56-week, randomized, double-blind, placebo-controlled trials. In all studies, SAXENDA® was titrated to 3 mg daily during a 4-week period. All patients received instruction for a reduced-calorie diet (approximately 500 kcal/day deficit) and physical activity counseling (recommended increase in physical activity of minimum 150 mins/week) that began with the first dose of study medication or placebo and continued throughout the trial.

Study 1 enrolled 3731 patients with obesity (BMI greater than or equal to 30 kg/m²) or with overweight (BMI 27-29.9 kg/m²) and at least one weight-related comorbid condition such as treated or untreated dyslipidemia or hypertension; patients with type 2 diabetes mellitus were excluded. Patients were randomized in a 2:1 ratio to either SAXENDA® or placebo. Patients were stratified based on the presence or absence of abnormal blood glucose measurements at randomization. All patients were treated for up to 56 weeks. Those patients with abnormal glucose measurements at randomization (2254 of the 3731 patients) were treated for a total of 160 weeks. At baseline, mean age was 45 years (range 18-78), 79% were women, 85% were Caucasian, 10% were African American, and 11% were Hispanic/Latino. Mean baseline body weight was 106.3 kg and mean BMI was 38.3 kg/m².

Study 2 was a 56-week trial that enrolled 635 patients with type 2 diabetes and with either overweight or obesity (as defined above). Patients were to have an HbA_{1c} of 7-10% and be treated with metformin, a sulfonylurea, or a glitazone as single agent or in any combination, or with a reduced-calorie diet and physical activity alone. Patients were randomized in a 2:1 ratio to receive either SAXENDA® or placebo. The mean age was 55 years (range 18-82), 50% were women, 83% were Caucasian, 12% were African American, and 10% were Hispanic/Latino. Mean baseline body weight was 105.9 kg and mean BMI was 37.1 kg/m².

Study 3 was a 56-week trial that enrolled 422 patients with obesity (BMI greater than or equal to 30 kg/m²) or with overweight (BMI 27-29.9 kg/m²) and at least one weight-related comorbid condition such as treated or untreated dyslipidemia or hypertension; patients with type 2 diabetes mellitus were excluded. All patients were first treated with a low-calorie diet (total energy intake 1200-1400 kcal/day) in a run-in period lasting up to 12 weeks. Patients who lost at least 5% of their screening body weight after 4 to 12 weeks during the run-in were then randomized, with equal allocation, to receive either SAXENDA® or placebo for 56 weeks. The mean age was 46 years (range 18-73), 81% were women, 84% were Caucasian, 13% were African American, and 7% were Hispanic/Latino. Mean baseline body weight was 99.6 kg and mean BMI was 35.6 kg/m².

The proportions of patients who discontinued study drug in the 56-week trials were 27% for the SAXENDA®-treated group and 35% for the placebo-treated group, and in the 160-week trial the proportions of patients who discontinued were 47% and 55%, respectively. In the 56-week trials, approximately 10% of patients treated with SAXENDA® and 4% of patients treated with placebo discontinued treatment due to an adverse reaction [see Adverse Reactions (6.1)]. The majority of patients who discontinued SAXENDA® due to adverse reactions did so during the first few months of treatment. In the 160-week trial the proportions of patients who discontinued due to an adverse reaction was 13% and 6% for SAXENDA®- and placebo-treated patients, respectively.

Effect of SAXENDA® on Body Weight in 56-week Trials

For Study 1 and Study 2, the primary efficacy parameters were mean percent change in body weight and the percentages of patients achieving greater than or equal to 5% and 10% weight loss from baseline to week 56. For Study 3, the primary efficacy parameters were mean percent change in body weight from randomization to week 56, the percentage of patients not gaining more than 0.5% body weight from randomization (i.e., after run-in) to week 56, and the percentage of patients achieving greater than or equal to 5% weight loss from randomization to week 56. Because losing at least 5% of fasting body weight through lifestyle intervention during the 4- to 12-week run-in was a condition for their continued participation in the randomized treatment period, the results may not reflect those expected in the general population.

Table 6 presents the results for the changes in weight observed in Studies 1, 2, and 3. After 56 weeks, treatment with SAXENDA® resulted in a statistically significant reduction in weight compared with placebo. Statistically significantly greater proportions of patients treated with SAXENDA® achieved 5% and 10% weight loss than those treated with placebo. In Study 3, statistically significantly more patients randomized to SAXENDA® than placebo had not gained more than 0.5% of body weight from randomization to week 56.

Table 6. Changes in Weight at Week 56 for Studies 1, 2, and 3

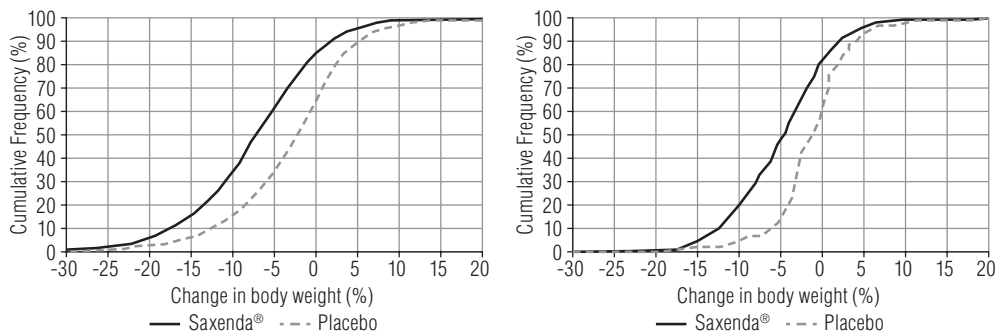
	Study 1 (Obesity or overweight with comorbidity)		Study 2 (Type 2 diabetes with obesity or overweight)		Study 3 (Obesity or overweight with comorbidity following at least 5% weight loss with diet)	
	SAXENDA® N=2487	Placebo N=1244	SAXENDA® N=423	Placebo N=212	SAXENDA® N=212	Placebo N=210
Weight						
Baseline mean (SD) (kg)	106.2 (21.2)	106.2 (21.7)	105.7 (21.9)	106.5 (21.3)	100.4 (20.8)	98.7 (21.2)
Percent change from baseline (LSMean)	-7.4	-3.0	-5.4	-1.7	-4.9	0.3
Difference from placebo (LSMean) (95% CI)	-4.5* (-5.2;-3.8)		-3.7* (-4.7;-2.7)		-5.2* (-6.8;-3.5)	
% of Patients losing greater than or equal to 5% body weight	62.3%	34.4%	49.0%	16.4%	44.2%	21.7%
Difference from placebo (LSMean) (95% CI)	27.9* (23.9;31.9)		32.6* (25.1;40.1)		22.6* (13.9;31.3)	
% of Patients losing greater than 10% body weight	33.9%	15.4%	22.4%	5.5%	25.4%	6.9%
Difference from placebo (LSMean) (95% CI)	18.5* (15.2;21.7)		16.9* (11.7;22.1)		18.5* (11.7;25.3)	

SD = Standard Deviation; CI = Confidence Interval

*p < 0.0001 compared to placebo. Type 1 error was controlled across the three endpoints.

Includes all randomized subjects who had a baseline body weight measurement. All available body weight data during the 56 week treatment period are included in the analysis. In Studies 1 and 2 missing values for week 56 were handled using multiple imputations analysis. In Study 3 missing values for week 56 were handled using weighted regression analysis.

The cumulative frequency distributions of change in body weight from baseline to week 56 are shown in Figure 2 for Studies 1 and 2. One way to interpret this figure is to select a change in body weight of interest on the horizontal axis and note the corresponding proportions of patients (vertical axis) in each treatment group who achieved at least that degree of weight loss. For example, note that the vertical line arising from -10% in Study 1 intersects the SAXENDA® and placebo curves at approximately 34% and 15%, respectively, which correspond to the values shown in Table 6.

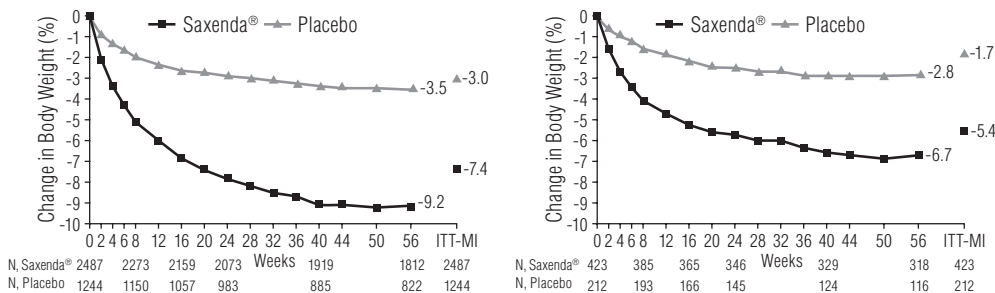


ITT, multiple imputations (MI)

ITT, multiple imputations (MI)

Figure 2. Change in body weight (%) from baseline to week 56 (Study 1 on left and Study 2 on right)

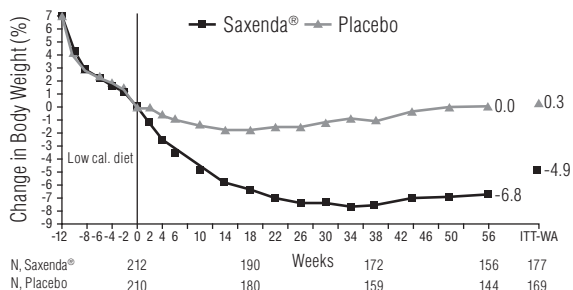
The time courses of weight loss with SAXENDA® and placebo from baseline through week 56 are depicted in Figures 3 and 4.



Observed values for patients on study drug completing each scheduled visit, and ITT with multiple imputations (ITT-MI)

Observed values for patients on study drug completing each scheduled visit, and ITT with multiple imputations (ITT-MI)

Figure 3. Change from baseline (%) in body weight (Study 1 on left and Study 2 on right)



Observed values for patients on study drug completing each scheduled visit, and ITT with weighted average (ITT-WA)

Figure 4. Change from baseline (%) in body weight during Study 3

Effect of SAXENDA® on Body Weight in a 160-week Trial (Study 1, Subset of Patients with Abnormal Blood Glucose at Randomization)

The numbers and percentages of patients known to have lost greater than or equal to 5% body weight at week 56 and/or week 160 in Study 1 (patients with abnormal glucose at randomization only) are summarized in Table 7 for descriptive purposes.

Table 7. Changes in Weight at Week 56 and Week 160 for Study 1 (Subset of Patients with Abnormal Blood Glucose at Randomization)

	SAXENDA® N = 1505	Placebo N = 749
Baseline mean body weight (SD) (kg)	107.5 (21.6)	107.9 (21.8)
Number (%) of patients known to lose greater than or equal to 5% body weight at 56 weeks	817 (56%)	182 (25%)
Number (%) of patients known to lose greater than or equal to 5% body weight at 160 weeks	424 (28%)	102 (14%)
Number (%) of patients known to lose greater than or equal to 5% body weight at both 56 weeks and 160 weeks	391 (26%)	74 (10%)
Number (%) of patients with weight assessment at 160 weeks	747 (50%)	322 (43%)

SD = Standard Deviation

Includes all randomized subjects who had a baseline body weight measurement. All available body weight data at 56 and 160 weeks are included in the analysis.

Effect of SAXENDA® on Anthropometry and Cardiometabolic Parameters in 56-week Trials

Changes in waist circumference and cardiometabolic parameters with SAXENDA® are shown in Table 8 for Study 1 (patients without diabetes mellitus) and Table 9 for Study 2 (patients with type 2 diabetes). Results from Study 3, which also enrolled patients without diabetes mellitus, were similar to Study 1.

Table 8. Mean Changes in Anthropometry and Cardiometabolic Parameters in Study 1 (Patients without Diabetes)

	SAXENDA® N = 2487		Placebo N = 1244		SAXENDA® minus Placebo (LSMean)
	Baseline	Change from Baseline (LSMean ¹)	Baseline	Change from Baseline (LSMean ¹)	
Waist Circumference (cm)	115.0	-8.2	114.5	-4.0	-4.2
Systolic Blood Pressure (mmHg)	123.0	-4.3	123.3	-1.5	-2.8
Diastolic Blood Pressure (mmHg)	78.7	-2.7	78.9	-1.8	-0.9
Heart Rate (bpm) ²	71.4	2.6	71.3	0.1	2.5
HbA _{1c} (%)	5.6	-0.3	5.6	-0.1	-0.2
	Baseline	% Change from Baseline (LSMean ¹)	Baseline	% Change from Baseline (LSMean ¹)	Relative Difference of SAXENDA® to Placebo (LSMean)
Total Cholesterol (mg/dL)*	193.8	-3.2	194.4	-0.9	-2.3
LDL Cholesterol (mg/dL)*	111.8	-3.1	112.3	-0.7	-2.4
HDL Cholesterol (mg/dL)*	51.4	2.3	50.9	0.5	1.9
Triglycerides (mg/dL) [†]	125.7	-13.0	128.3	-4.1	-7.1

Based on last observation carried forward method while on study drug

¹ Least squares mean adjusted for treatment, country, sex, pre-diabetes status at screening, baseline BMI stratum and an interaction between pre-diabetes status at screening and BMI stratum as fixed factors, and the baseline value as covariate.

² See Warnings and Precautions (5.5)

* Baseline value is the geometric mean

[†] Values are baseline median, median % change, and the Hodges-Lehmann estimate of the median treatment difference.

Table 9. Mean Changes in Anthropometry and Cardiometabolic Parameters in Study 2 (Patients with Diabetes Mellitus)

	SAXENDA® N = 423		Placebo N = 212		SAXENDA® minus Placebo (LSMean)
	Baseline	Change from Baseline (LSMean ¹)	Baseline	Change from Baseline (LSMean ¹)	
Waist Circumference (cm)	118.1	-6.0	117.3	-2.8	-3.2
Systolic Blood Pressure (mmHg)	128.9	-3.0	129.2	-0.4	-2.6
Diastolic Blood Pressure (mmHg)	79.0	-1.0	79.3	-0.6	-0.4
Heart Rate (bpm) ²	74.0	2.0	74.0	-1.5	3.4
HbA _{1c} (%)	7.9	-1.3	7.9	-0.4	-0.9
	Baseline	% Change from Baseline (LSMean ¹)	Baseline	% Change from Baseline (LSMean ¹)	Relative Difference of SAXENDA® to Placebo (LSMean)
Total Cholesterol (mg/dL)*	171.0	-1.4	169.4	2.4	-3.7
LDL Cholesterol (mg/dL)*	86.4	0.9	85.2	3.3	-2.3
HDL Cholesterol (mg/dL)*	45.2	4.8	45.4	1.9	2.9
Triglycerides (mg/dL) [†]	156.2	-14.5	155.8	-0.7	-13.5

Based on last observation carried forward method while on study drug

¹ Least squares mean adjusted for treatment, country, sex, background treatment, baseline HbA_{1c} stratum and an interaction between background treatment and HbA_{1c} stratum as fixed factors, and the baseline value as covariate.

² See Warnings and Precautions (5.5)

* Baseline value is the geometric mean

[†] Values are baseline median, median % change, and the Hodges-Lehmann estimate of the median treatment difference.

14.2 Weight Management Trial in Pediatric Patients Ages 12 and Older with Obesity

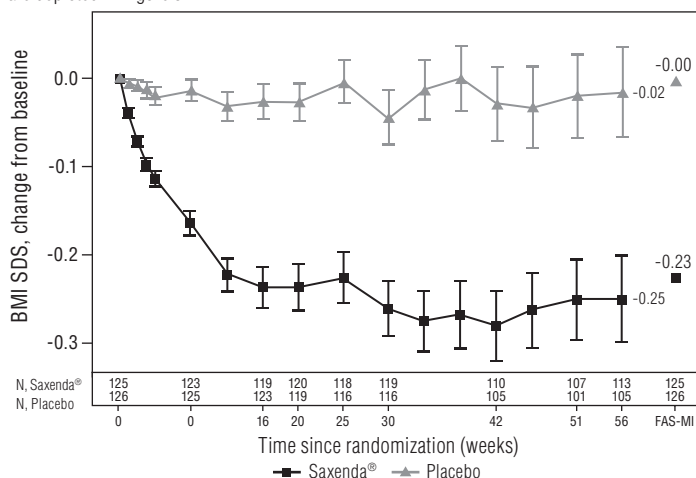
SAXENDA® was evaluated in a 56-week, double-blind, randomized, parallel group, placebo controlled multicenter trial in 251 pubertal pediatric patients aged 12 to 17 years, with BMI corresponding to 30 kg/m² or greater for adults by international cut-off points [see Dosage and Administration (2.1)] and BMI of 95th percentile or greater for age and sex (NCT02918279). After a 12-week lifestyle run-in period, patients were randomized 1:1 to SAXENDA® once-daily or placebo once-daily. The SAXENDA® dose was titrated to 3 mg over a 4- to 8-week period based on tolerability as judged by the investigator. Escalation of the trial product was not allowed if the subject had a self-monitored plasma glucose (SMPG) < 56 mg/dL or < 70 mg/dL in the presence of symptoms of hypoglycemia during the week prior to or during the dose escalation visits. The proportion of patients who reached the 3 mg dose was 82.4%; for 8.8% of patients 2.4 mg was the maximum tolerated dose.

The mean age was 14.5 years: 40.6% of patients were male, 87.6% were White, 0.8% were Asian, 8% were Black or African American; 22.3% were of Hispanic or Latino ethnicity. The mean baseline body weight was 100.8 kg, and mean Body Mass Index (BMI) was 35.6 kg/m².

The proportions of patients who discontinued study drug were 19.2% for the SAXENDA®-treated group and 20.6% for the placebo-treated group; 10.4% of patients treated with SAXENDA® and no patients treated with placebo discontinued treatment due to an adverse reaction [see Adverse Reactions (6.1)].

The primary endpoint was change in BMI SDS. At baseline, mean BMI SDS was 3.14 in the SAXENDA® group and 3.20 in the placebo group. At week 56, treatment with SAXENDA® resulted in statistically significant reduction in BMI SDS from baseline compared to placebo. The observed mean change in BMI SDS from baseline to week 56 was -0.23 in the SAXENDA® group and -0.00 in the placebo group. The estimated treatment difference in BMI SDS reduction from baseline between SAXENDA® and placebo was -0.22 with a 95% confidence interval of -0.37, -0.08; p=0.0022.

The time course of change in BMI SDS with SAXENDA® and placebo from baseline through week 56 are depicted in Figure 5.



BMI SDS: Body mass index standard deviation score. Line graphs are observed means. Error bar is: +/- standard error of mean

Number at week 56 are estimated means using multiple imputation (jump to reference) for patients completing each scheduled visits.

Figure 5. Change from Baseline in BMI SDS

Changes in weight and BMI with SAXENDA® are shown in Table 10. Changes in waist circumference and cardiometabolic parameters with SAXENDA® are shown in Table 11.

Table 10. Changes in Weight and BMI at Week 56 for Study 4 (Pediatric Patients Ages 12 to Less than 18)

	SAXENDA® N = 125	Placebo N = 126	SAXENDA® minus Placebo
Body Weight			
Baseline mean Body Weight (kg)	99.3	102.2	
Mean Change from Baseline (%)	-2.65	2.37	-5.01
BMI			
Baseline mean BMI (kg/m ²)	35.3	35.8	
Mean Change from Baseline (%)	-4.29	0.35	-4.64
Proportion of patients with greater than or equal to 5% reduction in baseline BMI at week 56 (%)	43.3%	18.7%	24.6%
Proportion of patients with greater than or equal to 10% reduction in baseline BMI at week 56 (%)	26.1%	8.1%	18.0%

Full Analysis Set. For body weight and BMI, baseline values are means, changes from baseline at week 56 are estimated means (least-squares) and treatment contrasts at week 56 are estimated treatment differences. Missing observations were imputed from the placebo arm based on a jump to reference multiple (x100) imputation approach.

Table 11. Mean Changes in Anthropometry and Cardiometabolic Parameters in Study 4 (Pediatric Patients Ages 12 to Less than 18)

	SAXENDA® N = 125		Placebo N = 126		SAXENDA® minus Placebo
	Baseline	Change from Baseline	Baseline	Change from Baseline	
Waist Circumference (cm)	105	-4.35	107	-1.42	-2.93
Systolic Blood Pressure (mmHg)	116	-1.21	117	0.84	-2.05
Diastolic Blood Pressure (mmHg)	72	0.77	73	-0.46	1.24
Heart Rate (bpm)*	75	1.87	78	-0.14	2.01
HbA _{1c} (%)	5.3	-0.10	5.3	-0.03	-0.06
	Baseline	% Change from Baseline	Baseline	% Change from Baseline	Relative Difference of SAXENDA® to Placebo
Total Cholesterol (mg/dL)**	154.2	0.84	152.2	-0.03	0.88
LDL Cholesterol (mg/dL)**	85.5	1.74	82.5	3.01	-1.27
HDL Cholesterol (mg/dL)**	42.7	5.14	42.7	3.33	1.81
Triglycerides (mg/dL)**	109.1	-0.12	112.2	-1.35	1.23

* See Warnings and Precautions (5.5)

Full Analysis Set. Baseline values are means, changes from baseline at week 56 are estimated means (least-squares) and treatment contrasts at week 56 are estimated treatment differences. Missing observations were imputed from the placebo arm based on a jump to reference multiple (x100) imputation approach.

** Baseline values are geometric means.

14.3 Cardiovascular Outcomes Trial of Liraglutide 1.8 mg in Adult Patients with Type 2 Diabetes and Cardiovascular Disease

Liraglutide 1.8 mg (Victoza®) is used in the treatment of type 2 diabetes mellitus in adults. The efficacy of liraglutide at doses below 3 mg daily has not been established for chronic weight management.

The LEADER trial (NCT01179048) randomized 9340 patients with inadequately controlled type 2 diabetes and cardiovascular disease to liraglutide 1.8 mg or placebo in addition to standard of care treatments for type 2 diabetes for a median duration of 3.5 years. Patients either were 50 years of age or older with established, stable cardiovascular, cerebrovascular, peripheral vascular disease, chronic renal failure or chronic heart failure (80% of patients), or were 60 years of age or older and had other specified risk factors of vascular disease (20% of patients). The population was 64% male, 78% Caucasian, 10% Asian and 8% Black; 12% of the population was Hispanic or Latino.

In total, 96.8% of the patients completed the trial; vital status was known at the end of the trial for 99.7%. The primary endpoint was the time from randomization to first occurrence of a major adverse cardiovascular event (MACE) defined as: cardiovascular death, non-fatal myocardial infarction, or non-fatal stroke. No increased risk for MACE was observed with liraglutide 1.8 mg. The total number of primary component MACE endpoints was 1302 (608 [13.0%] with liraglutide 1.8 mg and 694 [14.9%] with placebo).

16 HOW SUPPLIED/STORAGE AND HANDLING

16.1 How Supplied

SAXENDA® injection: 6 mg/mL clear, colorless solution in a 3 mL single-patient-use pre-filled pen that delivers doses of 0.6 mg, 1.2 mg, 1.8 mg, 2.4 mg or 3 mg is available in the following package sizes:

3 x SAXENDA® pen NDC 0169-2800-13

5 x SAXENDA® pen NDC 0169-2800-15

16.2 Recommended Storage

Prior to first use, SAXENDA® should be stored in a refrigerator between 36°F to 46°F (2°C to 8°C). Do not store in the freezer or directly adjacent to the refrigerator cooling element. Do not freeze SAXENDA® and do not use SAXENDA® if it has been frozen.

After initial use of the SAXENDA® pen, the pen can be stored for 30 days at controlled room temperature (59°F to 86°F; 15°C to 30°C) or in a refrigerator (36°F to 46°F; 2°C to 8°C). Keep the pen cap on when not in use. Protect SAXENDA® from excessive heat and sunlight. Always remove and safely discard the needle after each injection and store the SAXENDA® pen without an injection needle attached. This will reduce the potential for contamination, infection, and leakage while also ensuring dosing accuracy.

17 PATIENT COUNSELING INFORMATION

Advise the patient to read the FDA-approved patient labeling (Medication Guide and Instructions for Use).

Instructions

Advise patients to take SAXENDA® exactly as prescribed. Instruct patients to follow the dose escalation schedule and to not take more than the recommended dose.

Instruct adult patients to discontinue SAXENDA® if they have not achieved 4% weight loss by 16 weeks of treatment. Instruct pediatric patients 12 years of age and older to discontinue SAXENDA® if they have not achieved a BMI reduction of 1% from baseline after 12 weeks on the maintenance dose.

Risk of Thyroid C-cell Tumors

Inform patients that liraglutide causes benign and malignant thyroid C-cell tumors in mice and rats and that the human relevance of this finding has not been determined. Counsel patients to report symptoms of thyroid tumors (e.g., a lump in the neck, hoarseness, dysphagia or dyspnea) to their health care provider [see Boxed Warning and Warnings and Precautions (5.1)].

Acute Pancreatitis

Inform patients of the potential risk for acute pancreatitis. Explain that persistent severe abdominal pain that may radiate to the back which may or may not be accompanied by vomiting is the hallmark symptom of acute pancreatitis. Instruct patients to discontinue SAXENDA® promptly and contact their health care provider if persistent severe abdominal pain occurs.

Acute Gallbladder Disease

Inform patients of the risk of acute gallbladder disease. Advise patients that substantial or rapid weight loss can increase the risk of gallbladder disease, but that gallbladder disease may also occur in the absence of substantial or rapid weight loss. Instruct patients to contact their healthcare provider for appropriate clinical follow-up if gallbladder disease is suspected.

Hypoglycemia

Inform pediatric patients of the risk of hypoglycemia and educate all patients on the signs and symptoms of hypoglycemia. Inform adult patients with type 2 diabetes mellitus on an insulin secretagogue (e.g., sulfonylurea) or insulin that they may have an increased risk of hypoglycemia when using SAXENDA® and to report signs and/or symptoms of hypoglycemia to their healthcare provider.

Heart Rate Increase

Inform patients to report symptoms of sustained periods of heart pounding or racing while at rest to their healthcare provider. Discontinue SAXENDA® in patients who experience a sustained increase in resting heart rate.

Dehydration and Renal Impairment

Advise patients of the risk of dehydration due to gastrointestinal adverse reactions and to take precautions to avoid fluid depletion. Inform patients of the potential risk for worsening renal function, which in some cases may require dialysis.

Hypersensitivity Reactions

Inform patients that serious hypersensitivity reactions have been reported during postmarketing use of SAXENDA®. Advise patients on the symptoms of hypersensitivity reactions and instruct them to stop taking SAXENDA® and seek medical advice promptly if such symptoms occur [see Warnings and Precautions (5.7)].

Suicidal Behavior and Ideation

Advise patients to report emergence or worsening of depression, suicidal thoughts or behavior, and/or any unusual changes in mood or behavior. Inform patients that if they experience suicidal thoughts or behaviors, they should stop taking SAXENDA®.

Jaundice and Hepatitis

Inform patients that jaundice and hepatitis have been reported during postmarketing use of liraglutide. Instruct patients to contact their healthcare provider if they develop jaundice.

Never Share a SAXENDA® Pen Between Patients

Inform patients that they should never share a SAXENDA® pen with another person, even if the needle is changed. Sharing of the pen between patients may pose a risk of transmission of infection.

Version: 10

SAXENDA® and VICTOZA® are registered trademarks of Novo Nordisk A/S.

PATENT Information: <http://novonordisk-us.com/products/product-patents.html>

Manufactured by:
Novo Nordisk A/S
DK-2880 Bagsvaerd, Denmark

For information about SAXENDA® contact:

Novo Nordisk Inc.
800 Scudders Mill Road
Plainsboro, NJ 08536
1-844-363-4448

© 2023 Novo Nordisk
US23SX00010 5/2023



MEDICATION GUIDE

SAXENDA® (sax-end-ah) (liraglutide) injection for subcutaneous use

Do not share your SAXENDA® pen with others even if the needle has been changed. You may give other people a serious infection or get a serious infection from them.

What is the most important information I should know about SAXENDA®?

Serious side effects may happen in people who take SAXENDA®, including:

Possible thyroid tumors, including cancer. Tell your healthcare provider if you get a lump or swelling in your neck, hoarseness, trouble swallowing, or shortness of breath. These may be symptoms of thyroid cancer. In studies with rats and mice, SAXENDA® and medicines that work like SAXENDA® caused thyroid tumors, including thyroid cancer. It is not known if SAXENDA® will cause thyroid tumors or a type of thyroid cancer called medullary thyroid carcinoma (MTC) in people.

Do not use SAXENDA® if you or any of your family have ever had a type of thyroid cancer called medullary thyroid carcinoma (MTC), or if you have an endocrine system condition called Multiple Endocrine Neoplasia syndrome type 2 (MEN 2).

What is SAXENDA®?

SAXENDA® is an injectable prescription medicine used for adults with obesity or overweight (excess weight) who also have weight related medical problems, and children aged 12 to 17 years with a body weight above 132 pounds (60 kg) and obesity to help them lose weight and keep the weight off.

- SAXENDA® should be used with a reduced calorie diet and increased physical activity.
- SAXENDA® and VICTOZA® have the same active ingredient, liraglutide, and should not be used together or with other GLP-1 receptor agonist medicines.
- It is not known if SAXENDA® is safe and effective when taken with other prescription, over-the-counter medicines, or herbal weight loss products.
- It is not known if SAXENDA® is safe and effective in children under 12 years of age.
- It is not known if SAXENDA® is safe and effective in children aged 12 to 17 years with type 2 diabetes.

Who should not use SAXENDA®?

Do not use SAXENDA® if:

- you or any of your family have ever had a type of thyroid cancer called medullary thyroid carcinoma (MTC) or if you have an endocrine system condition called Multiple Endocrine Neoplasia syndrome type 2 (MEN 2).
- you have had a serious allergic reaction to liraglutide or any of the ingredients in SAXENDA®. See the end of this Medication Guide for a complete list of ingredients in SAXENDA®. Symptoms of a serious allergic reaction include:
 - swelling of your face, lips, tongue, or throat
 - severe rash or itching
 - very rapid heartbeat
 - problems breathing or swallowing
 - fainting or feeling dizzy
- are pregnant or plan to become pregnant. SAXENDA® may harm your unborn baby.

Before taking SAXENDA®, tell your healthcare provider about all of your medical conditions, including if you:

- are taking certain medicines called GLP-1 receptor agonists.
- have severe problems with your stomach, such as slowed emptying of your stomach (gastroparesis) or problems with digesting food.
- have or have had problems with your pancreas, kidneys or liver.
- have or have had depression or suicidal thoughts, or mental health issues.
- are breastfeeding or plan to breastfeed. It is not known if SAXENDA® passes into your breast milk. You and your healthcare provider should decide if you will use SAXENDA® or breastfeed.

Tell your healthcare provider about all the medicines you take including prescription, over-the-counter medicines, vitamins, and herbal supplements. SAXENDA® slows stomach emptying and can affect medicines that need to pass through the stomach quickly. SAXENDA® may affect the way some medicines work and some other medicines may affect the way SAXENDA® works.

Tell your healthcare provider if you take diabetes medicines, especially insulin and sulfonylurea medicines. Talk with your healthcare provider if you are not sure if you take any of these medicines.

How should I use SAXENDA®?

- Read the **Instructions for Use** that comes with SAXENDA®.
- Use SAXENDA® exactly as prescribed by your healthcare provider.
- Your healthcare provider should show you how to use SAXENDA® before you use it for the first time.
- Use SAXENDA® exactly as prescribed by your healthcare provider. Your dose should be increased after using SAXENDA® for 1 week until you reach the 3 mg dose.
- Start SAXENDA® with 0.6 mg per day in your first week. In your second week, increase your daily dose to 1.2 mg. In the third week, increase your daily dose to 1.8 mg. In the fourth week, increase your daily dose to 2.4 mg and in the fifth week onwards, increase your daily dose to the full dose of 3 mg. After that, do not change your dose unless your healthcare provider tells you to. Children may reduce their dose to 2.4 mg daily if the maximum dose is not tolerated.
- SAXENDA® is injected 1 time each day, at any time during the day.
- Inject your dose of SAXENDA® under the skin (subcutaneously) in your stomach area (abdomen), upper leg (thigh), or upper arm, as instructed by your healthcare provider. **Do not inject into a vein or muscle.**
- Change (rotate) your injection site within the area you choose with each injection to reduce your risk of getting lumps under the skin (cutaneous amyloidosis). **Do not** use the same site for each injection.
- If you take too much SAXENDA®, call your healthcare provider right away. Taking too much SAXENDA® may cause severe nausea, severe vomiting, and low blood sugar (hypoglycemia).
- If you miss your daily dose of SAXENDA®, just take your next daily dose as usual on the following day. Do not take an extra dose of SAXENDA® or increase your dose on the following day to make up for your missed dose. If you miss your dose of SAXENDA® for **3 days or more**, call your healthcare provider to talk about how to restart your treatment.

- You can take SAXENDA® with or without food.
- Throw away the used SAXENDA® pen after 30 days.

Your healthcare provider should start you on a reduced calorie diet and increased physical activity when you start taking SAXENDA®. Stay on this program while you are taking SAXENDA®.

What are the possible side effects of SAXENDA®?

SAXENDA® may cause serious side effects, including:

- **See “What is the most important information I should know about SAXENDA®?”**
- **inflammation of the pancreas (pancreatitis).** Stop using SAXENDA® and call your healthcare provider right away if you have severe pain in your stomach area (abdomen) that will not go away, with or without vomiting. You may feel the pain from your stomach area (abdomen) to your back.
- **gallbladder problems.** SAXENDA® may cause gallbladder problems including gallstones. Some gallbladder problems need surgery. Call your healthcare provider if you have any of the following symptoms:
 - pain in your upper stomach (abdomen)
 - fever
 - yellowing of your skin or eyes (jaundice)
 - clay-colored stools
- **increased risk of low blood sugar (hypoglycemia) in adults with type 2 diabetes mellitus who also take medicines to treat type 2 diabetes mellitus such as sulfonylureas or insulin.**
- **risk of low blood sugar (hypoglycemia) in children who are 12 years of age and older without type 2 diabetes mellitus**
- Signs and symptoms of low blood sugar may include:
 - shakiness
 - sweating
 - headache
 - drowsiness
 - weakness
 - dizziness
 - confusion
 - irritability
 - hunger
 - fast heartbeat
 - feeling jittery

Talk to your healthcare provider about how to recognize and treat low blood sugar. You should check your blood sugar before you start taking SAXENDA® and while you take SAXENDA®.

- **increased heart rate.** SAXENDA® can increase your heart rate while you are at rest. Your healthcare provider should check your heart rate while you take SAXENDA®. Tell your healthcare provider if you feel your heart racing or pounding in your chest and it lasts for several minutes.
- **kidney problems (kidney failure).** SAXENDA® may cause nausea, vomiting or diarrhea leading to loss of fluids (dehydration). Dehydration may cause kidney failure which can lead to the need for dialysis. This can happen in people who have never had kidney problems before. Drinking plenty of fluids may reduce your chance of dehydration. Call your healthcare provider right away if you have nausea, vomiting, or diarrhea that does not go away, or if you cannot drink liquids by mouth.
- **serious allergic reactions.** Stop using SAXENDA®, and get medical help right away if you have any symptoms of a serious allergic reaction including:
 - swelling of your face, lips, tongue, or throat
 - fainting or feeling dizzy
 - very rapid heartbeat
 - problems breathing or swallowing
 - severe rash or itching
- **depression or thoughts of suicide.** You should pay attention to any mental changes, especially sudden changes, in your mood, behaviors, thoughts, or feelings. Call your healthcare provider right away if you have any mental changes that are new, worse, or worry you.

The most common side effects of SAXENDA® in adults include:

- nausea
- change in enzyme (lipase) levels in your blood
- diarrhea
- constipation
- vomiting
- injection site reaction
- low blood sugar (hypoglycemia)
- headache
- upset stomach (dyspepsia)
- tiredness (fatigue)
- dizziness
- stomach pain

Additional common side effects in children are fever and gastroenteritis

Tell your healthcare provider if you have any side effect that bothers you or that does not go away.

These are not all the possible side effects of SAXENDA®. Call your doctor for medical advice about side effects. You may report side effects to FDA at 1-800-FDA-1088.

Keep your SAXENDA® pen, pen needles, and all medicines out of the reach of children.

General information about the safe and effective use of SAXENDA®.

Medicines are sometimes prescribed for purposes other than those listed in a Medication Guide. Do not use SAXENDA® for a condition for which it was not prescribed. Do not give SAXENDA® to other people, even if they have the same symptoms that you have. It may harm them.

You can ask your pharmacist or healthcare provider for information about SAXENDA® that is written for health professionals.

What are the ingredients in SAXENDA®?

Active ingredient: liraglutide

Inactive ingredients: disodium phosphate dihydrate, propylene glycol, phenol and water for injection. Hydrochloric acid or sodium hydroxide may be added to adjust the pH.

Manufactured by: Novo Nordisk A/S, DK-2880 Bagsvaerd, Denmark.

For information about SAXENDA® go to www.SAXENDA.com or contact: Novo Nordisk Inc., 800 Scudders Mill Road, Plainsboro, NJ 08536 1-844-363-4448.

SAXENDA®, VICTOZA®, and NovoFine® are registered trademarks of Novo Nordisk A/S.

PATENT Information: <http://novonordisk-us.com/products/product-patents.html>

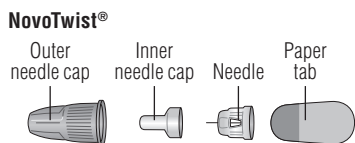
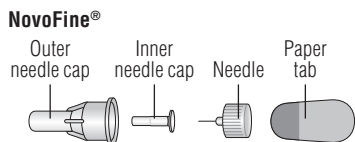
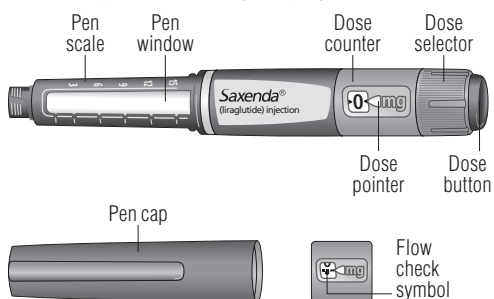
This Medication Guide has been approved by the U.S. Food and Drug Administration.

Revised: 06/2022

Instructions for Use

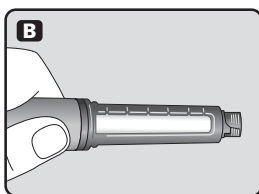
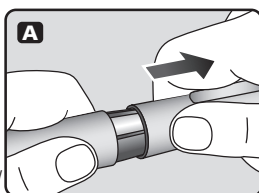
- Read these instructions carefully before using your Saxenda® pen.
- Do not use your pen without proper training from your healthcare provider. Make sure that you know how to give yourself an injection with the pen before you start your treatment.
- ⚠ If you are blind or have poor eyesight and cannot read the dose counter on the pen, do not use this pen without help. Get help from a person with good eyesight who is trained to use the Saxenda® pen.
- You can refresh your training at any time by watching the online training video at www.saxenda.com.
- Start by checking your pen to make sure that it contains Saxenda®, then look at the pictures below to get to know the different parts of your pen and needle.
- Your pen is a prefilled, dial-a-dose, single-patient-use pen. It contains 18 mg of liraglutide, and you can select doses of 0.6 mg, 1.2 mg, 1.8 mg, 2.4 mg or 3 mg. Your pen is made to be used with NovoFine® or NovoTwist® disposable needles up to a length of 8 mm. Pen needles are not included with your Saxenda® pen.

Saxenda® pen and needle (example)

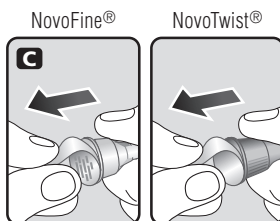


Step 1. Prepare your pen with a new needle

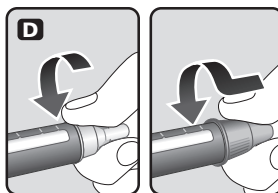
- Wash your hands with soap and water.
- Check the name and colored label of your pen, to make sure that it contains Saxenda®. This is especially important if you take more than 1 type of medicine.
- Pull off the pen cap.
- Check that Saxenda® in your pen is clear and colorless. Look through the pen window. If Saxenda® looks cloudy, do not use the pen.



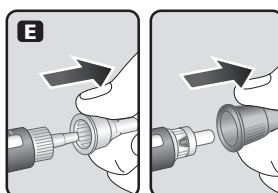
- Take a new needle, and tear off the paper tab.



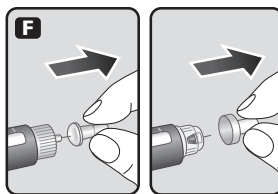
- Push the needle straight onto the pen. Turn until it is on tight.



- Pull off the outer needle cap. Do not throw it away.



- Pull off the inner needle cap and throw it away. A drop of Saxenda® may appear at the needle tip. This is normal, but you must still check the Saxenda® flow, if you use a new pen for the first time.



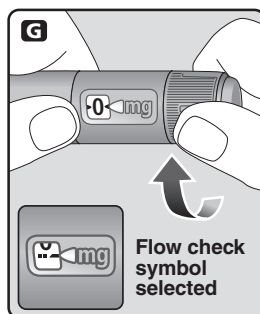
Always use a new needle for each injection.

This will prevent contamination, infection, leakage of Saxenda®, and blocked needles leading to the wrong dose. **Never use a bent or damaged needle.**

- Ⓜ Do not attach a new needle to your pen until you are ready to take your injection.

Step 2. Check the Saxenda® flow with each new pen.

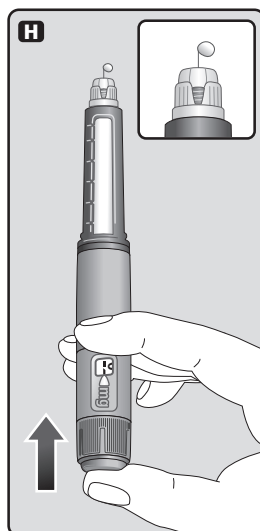
- Check the Saxenda® flow before your first injection with each new pen. If your Saxenda® pen is already in use, go to Step 3 "Select your dose".
- Turn the dose selector until the dose counter shows the flow check symbol (--).



- Hold the pen with the needle pointing up. Press and hold in the dose button until the dose counter shows 0. The 0 must line up with the dose pointer.

- If no drop appears, repeat Step 2 above as shown in Figures G and H up to 6 times. If there is still no drop, change the needle and repeat Step 2 as shown in Figures G and H 1 more time.

Do not use the pen if a drop of Saxenda® still does not appear. Contact Novo Nordisk at 1-844-363-4448.



- ⚠ Always make sure that a drop appears at the needle tip before you use a new pen for the first time. This makes sure that Saxenda® flows. If no drop appears, you will not inject any Saxenda®, even though the dose counter may move. **This may mean that there is a blocked or damaged needle.**

- Ⓜ A small drop may remain at the needle tip, but it will not be injected.

Only check the Saxenda® flow before your first injection with each new pen.

Step 3. Select your dose

- Turn the dose selector until the dose counter shows your dose (0.6 mg, 1.2 mg, 1.8 mg, 2.4 mg or 3 mg).

Make sure you know the dose of Saxenda® you should use.

If you select the wrong dose, you can turn the dose selector forward or backwards to the correct dose.

- ⚠ Always use the dose counter and the dose pointer to see how many mg you select.

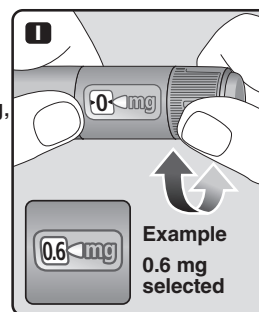
You will hear a "click" every time you turn the dose selector.

Do not set the dose by counting the number of clicks you hear.

Do not use the pen scale to set the dose. It does not show exactly how much Saxenda® is left in your pen.

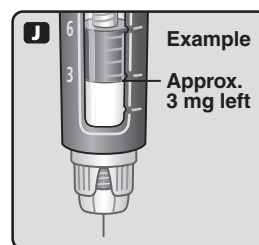
Only doses of 0.6 mg, 1.2 mg, 1.8 mg, 2.4 mg or 3 mg can be selected with the dose selector. The selected dose must line up exactly with the dose pointer to make sure that you get a correct dose.

- Ⓜ The dose selector changes the dose. Only the dose counter and dose pointer will show how many mg you select for each dose. You can select up to 3 mg each dose. When your pen contains less than 3 mg the dose counter stops before 3 mg is shown. The dose selector clicks differently when turned forward, backwards or past the number of mg left. Do not count the pen clicks.



- Ⓜ How much Saxenda® is left?

- The pen scale shows you about how much Saxenda® is left in your pen.



- To see how much Saxenda® is left, use the dose counter:

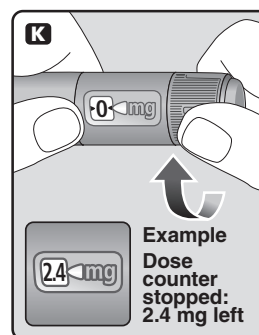
Turn the dose selector until the dose counter stops. If it shows 3, at least 3 mg are left in your pen. If the dose counter stops before 3 mg, there is not enough Saxenda® left for a full dose of 3 mg.

- Ⓜ If you need more Saxenda® than what is left in your pen

Only if trained or told by your healthcare provider, you may split your dose between your current pen and a new pen. Use a calculator to plan the doses as instructed by your healthcare provider.

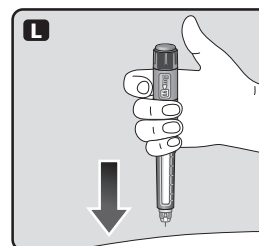
- ⚠ Be very careful to calculate correctly.

If you are not sure how to split your dose using 2 pens, then select and inject the dose you need with a new pen.

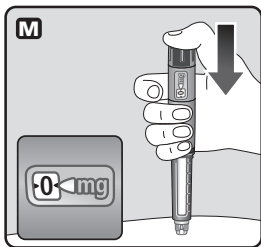


Step 4. Inject your dose

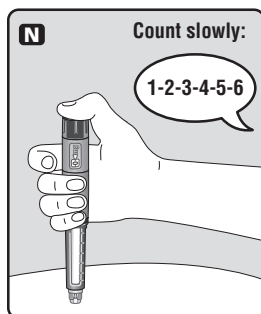
- Insert the needle into your skin as your healthcare provider has shown you.
- Make sure you can see the dose counter. Do not cover it with your fingers. This could stop the injection.



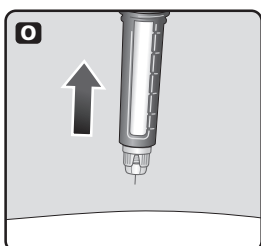
- **Press and hold down the dose button until the dose counter shows 0.** The 0 must line up with the dose pointer. You may then hear or feel a click.



- **Keep the needle in your skin after the dose counter has returned to 0 and count slowly to 6.**
- If the needle is removed earlier, you may see a stream of Saxenda® coming from the needle tip. If this happens, the full dose will not be delivered.



- **Remove the needle from your skin.** If blood appears at the injection site, press lightly. Do not rub the area.
- ⚠ **Always watch the dose counter to know how many mg you inject.** Hold the dose button down until the dose counter shows 0.



How to identify a blocked or damaged needle?

- If 0 does not appear in the dose counter after continuously pressing the dose button, you may have used a blocked or damaged needle.
- If this happens you have **not** received **any** Saxenda® even though the dose counter has moved from the original dose that you have set.

How to handle a blocked needle?

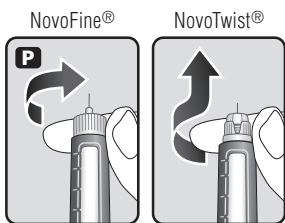
Change the needle as described in Step 5, and repeat all steps starting with Step 1: “Prepare your pen with a new needle”. Make sure you select the full dose you need.

Never touch the dose counter when you inject. This can stop the injection.

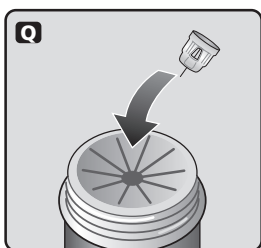
- ① You may see a drop of Saxenda® at the needle tip after injecting. This is normal and does not affect your dose.

Step 5. After your injection

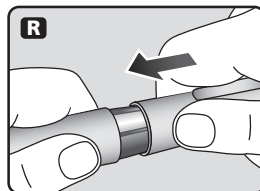
- **Carefully remove the needle from the pen.** Do not put the needle caps back on the needle, to avoid needle sticks.



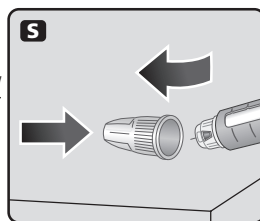
- **Place the needle in a sharps container right away to reduce the risk of needle sticks.**



- **Put the pen cap on your pen after each use to protect Saxenda® from light.**



- ① If you do not have a sharps container, follow a 1-handed needle recapping method. Carefully slip the needle into the outer needle cap. Dispose of the needle in a sharps container as soon as possible.



- ⚠ **Never try to put the inner needle cap back on the needle.** You may stick yourself with the needle.

Always remove the needle from your pen.

This prevents contamination, infection, leakage of Saxenda®, and blocked needles leading to the wrong dose. If the needle is blocked, you will **not** inject any Saxenda®.

- ① **Always dispose of the needle after each injection.**

- **Do not throw away in the household trash.** Put the needle and any empty Saxenda® pen or any pen used for 30 days still containing Saxenda® in a FDA-cleared sharps disposal container right away after use.
- If you do not have a FDA-cleared sharps disposal container, you may use a household container that is:
 - made of a heavy-duty plastic
 - can be closed with a tight-fitting, puncture-resistant lid, without sharps being able to come out upright and stable during use
 - leak-resistant
 - properly labeled to warn of hazardous waste inside the container
- When your sharps disposal container is almost full, you will need to follow your community guidelines for the right way to dispose of your sharps disposal container. There may be state or local laws about how you should throw away used needles and syringes. For more information about the safe sharps disposal, and for specific information about sharps disposal in the state that you live in, go to the FDA's website at: <http://www.fda.gov/safesharpsdisposal>
- Do not dispose of your used sharps disposal container in your household trash unless your community guidelines permit this. Do not recycle your used sharps disposal container.
- Safely dispose of Saxenda® that is out of date or no longer needed.

⚠ Important

- Caregivers must **be very careful when handling used needles** to prevent needle sticks and cross infection.
- Never use a syringe to withdraw Saxenda® from your pen.
- **Always carry an extra pen and new needles** with you, in case of loss or damage.
- Always keep your pen and needles **out of reach of others**, especially children.
- **Do not share your Saxenda® pen or needles with anyone else.** You may give an infection to them or get an infection from them.
- **Always keep your pen with you.** Do not leave it in a car or other place where it can get too hot or too cold.

Caring for your pen

- **Do not drop your pen or knock it against hard surfaces.** If you drop it or suspect a problem, attach a new needle and check the Saxenda® flow before you inject.
- **Do not try to repair your pen** or pull it apart.
- **Do not expose your pen to dust, dirt or liquid.**
- **Do not wash, soak, or lubricate your pen.** If necessary, clean it with mild detergent on a moistened cloth.

How should I store my Saxenda® pen?

- Store your **new, unused** Saxenda® pens in the refrigerator at 36°F to 46°F (2°C to 8°C).
- **Store your pen in use** for 30 days at 59°F to 86°F (15°C to 30°C) or in a refrigerator at 36°F to 46°F (2°C to 8°C).

- The Saxenda® pen you are using should be thrown away after 30 days, even if it still has Saxenda® left in it.
- **Do not** freeze Saxenda®. **Do not** use Saxenda® if it has been frozen.
- Unused Saxenda® pens may be used until the expiration date printed on the label, if kept in the refrigerator.
- Keep Saxenda® away from heat and out of the light.

This Medication Guide and Instructions for Use have been approved by the U.S. Food and Drug Administration.

December 2020

© 2023 Novo Nordisk
US23SX00010 5/2023

